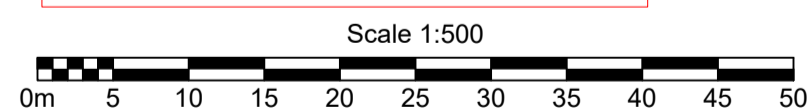


AS CONSTRUCTED



B.B.H PTY. LTD ABN 010 427 531
(trading as Bennett and Bennett Group) hereby certify
that the vertical and horizontal locations, and
dimensions shown on this plan are a true and
correct record of the As Constructed information.

[Signature]
Director
Cadastral Surveyor

[Signature]
Director
Engineering

Date 25/11/2020

I,
hereby certify that the As Constructed
information shown on this plan is a true and
correct record of sizes, types, materials,
classes etc, and it corresponds with the
relevant approved Engineering Drawings

Signed

RPEQ No. Date

Revisions			
Rev	Description	Date	Initial
A	ORIGINAL	24/11/2020	CTN

SEWER - AS CONSTRUCTED
ASHFORD RESIDENCES
Ashmore Street, Everton Park
QLD, 4053

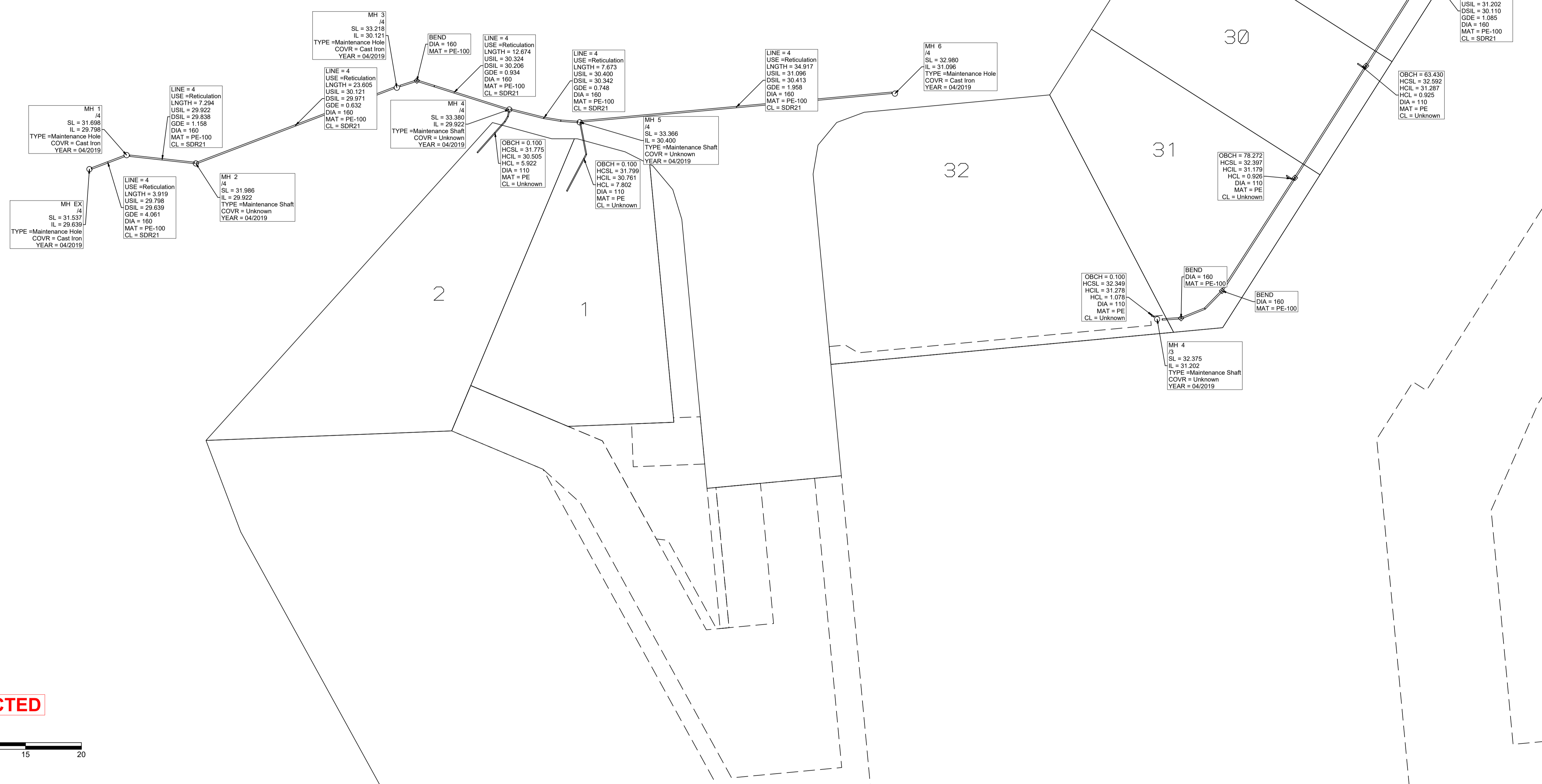
Client: The Mirvac Group
Job No: 191518
Authority: Brisbane City Council
Plan No: 191518_042_ASC.pdf
DWG File: 191518_042_ASC.dwg
Level Origin & Datum: PSM106537 AHD
1:500 @ A1 Drawn: CTN
Date: 24/11/20

BENNETT + BENNETT

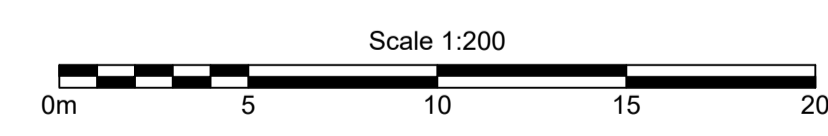
PO Box 5021, GCMC QLD 9726
Ph: (07) 5631 8000
mail@bennettandbennett.com.au
www.bennettandbennett.com.au

ASHMORE ST

SEE SHEET 2



AS CONSTRUCTED



B.B.H PTY. LTD ABN 010 427 531
(trading as Bennett and Bennett Group) hereby certify that the vertical and horizontal locations, and dimensions shown on this plan are a true and correct record of the As Constructed information.

[Signature]
Director
Cadastral Surveyor

[Signature]
Director

Date 25/11/2020

I, hereby certify that the As Constructed information shown on this plan is a true and correct record of sizes, types, materials, classes etc, and it corresponds with the relevant approved Engineering Drawings

Signed

RPEQ No. Date



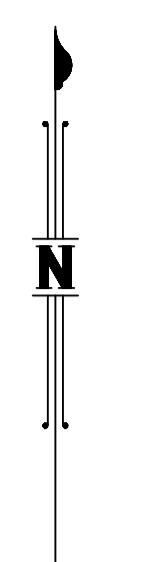
Revisions			
Rev	Description	Date	Initial
A	ORIGINAL	24/11/2020	CTN

SEWER - AS CONSTRUCTED
ASHFORD RESIDENCES
Ashmore Street, Everton Park
QLD, 4053

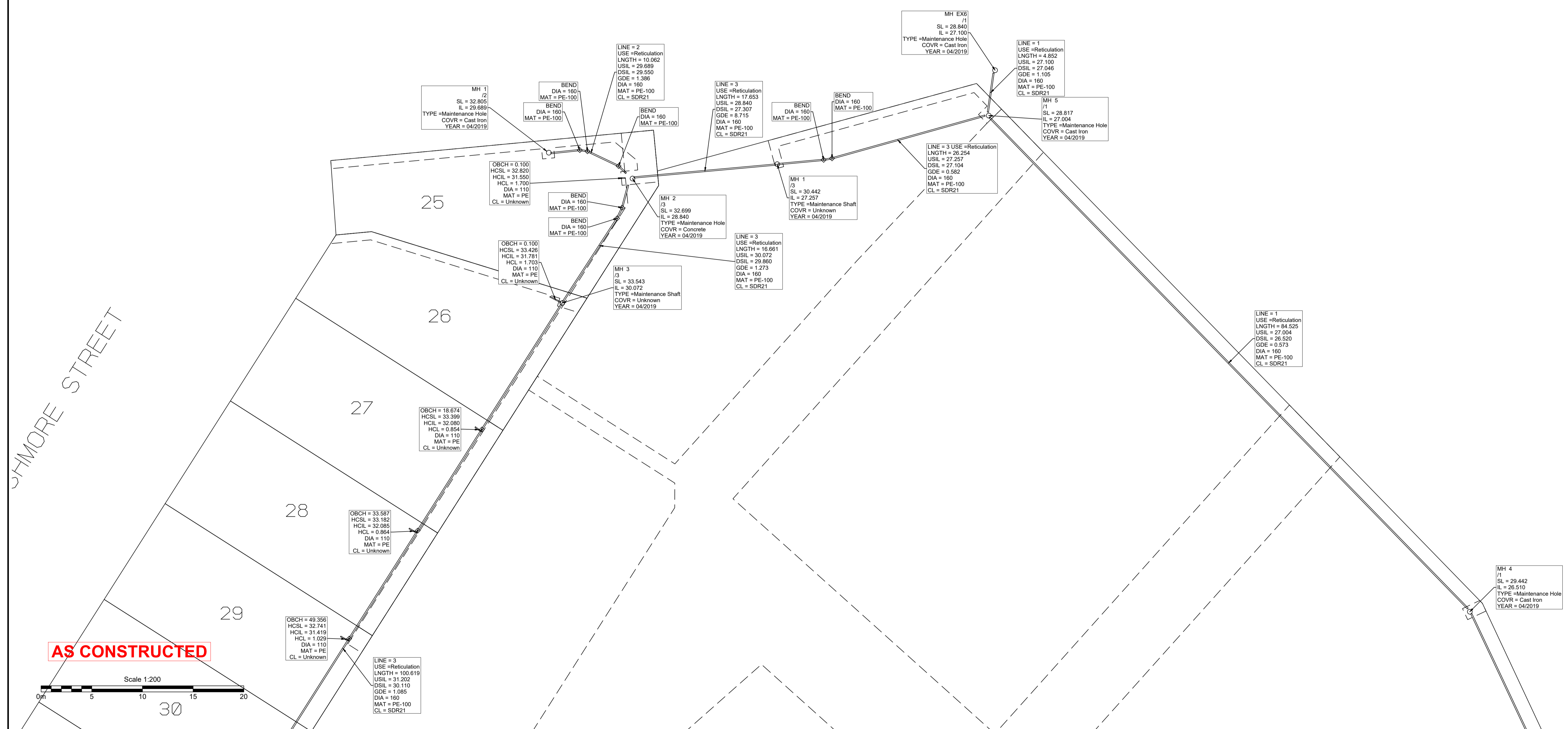
Client:	The Mirvac Group
Job No:	191518
Authority:	Brisbane City Council
Plan No:	191518_042_ASC.pdf
DWG File:	191518_042_ASC.dwg
Level Origin & Datum:	PSM106537 AHD
Scale:	1:250 @ A1
Drawn:	CTN
Date:	24/11/20

BENNETT + BENNETT

PO Box 5021, GCMC QLD 9726
Ph: (07) 5631 8000
mail@bennettandbennett.com.au
www.bennettandbennett.com.au



SEE SHEET 3



B.B.H PTY. LTD ABN 010 427 531
 (trading as Bennett and Bennett Group) hereby certify
 that the vertical and horizontal locations, and
 dimensions shown on this plan are a true and
 correct record of the As Constructed information.

[Signature]
 Director of Cadastral Survey
 Date 25/11/2020

I,
 hereby certify that the As Constructed
 information shown on this plan is a true and
 correct record of sizes, types, materials,
 classes etc, and it corresponds with the
 relevant approved Engineering Drawings

Signed
 RPEQ No. Date

QUEENSLAND
UrbanUtilities

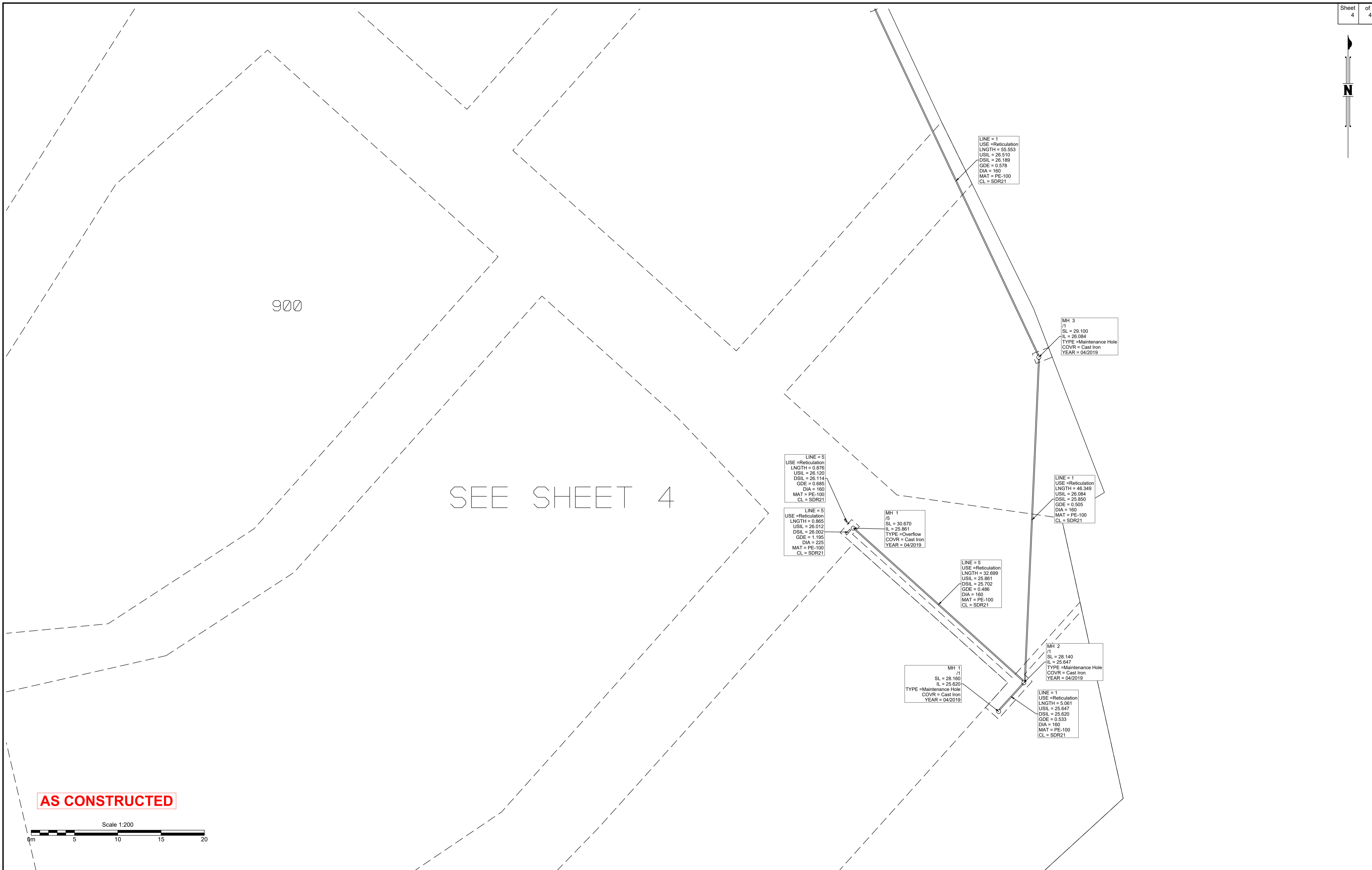
Revisions			
Rev	Description	Date	Initial
A	ORIGINAL	24/11/2020	CTN

SEWER - AS CONSTRUCTED
ASHFORD RESIDENCES
 Ashmore Street, Everton Park
 QLD, 4053

Client: The Mirvac Group
 Job No: 191518
 Authority: Brisbane City Council
 Plan No: 191518_042_ASC.pdf
 DWG File: 191518_042_ASC.dwg
 Level Origin & Datum: PSM106537 AHD
 1:1000 @ A1 Drawn: CTN
 Date: 24/11/20

BENNETT + BENNETT

PO Box 5021, GCMC QLD 9726
 Ph: (07) 5631 8000
 mail@bennettandbennett.com.au
 www.bennettandbennett.com.au



B.B.H PTY. LTD ABN 010 427 531
(trading as Bennett and Bennett Group) hereby certify
that the vertical and horizontal locations, and
dimensions shown on this plan are a true and
correct record of the As Constructed information.

[Signature]
Director
Cadastral Surveyor

COMMON SEAL

Date 25/11/2020

I,
hereby certify that the As Constructed
information shown on this plan is a true and
correct record of sizes, types, materials,
classes etc, and it corresponds with the
relevant approved Engineering Drawings

Signed
Date

RPEQ No. Date



Revisions			
Rev	Description	Date	Initial
A	ORIGINAL	24/11/2020	CTN

SEWER - AS CONSTRUCTED
ASHFORD RESIDENCES
Ashmore Street, Everton Park
QLD, 4053

Client:	The Mirvac Group
Job No:	191518
Authority:	Brisbane City Council
Plan No:	191518_042_ASC.pdf
DWG File:	191518_042_ASC.dwg
Level Origin & Datum:	PSM106537 AHD
1:1000 @ A1	Drawn: CTN
Date:	24/11/20

BENNETT + BENNETT

PO Box 5021, GCMC QLD 9726
Ph: (07) 5631 8000
mail@bennettandbennett.com.au
www.bennettandbennett.com.au