

BBH Pty Ltd (ACN 010 427 531), hereby certify that the details shown on this plan and associated dataset are a true representation of our field survey for this site.

*[Signature]* Director  
Cadastral Surveyor

*[Signature]* Director

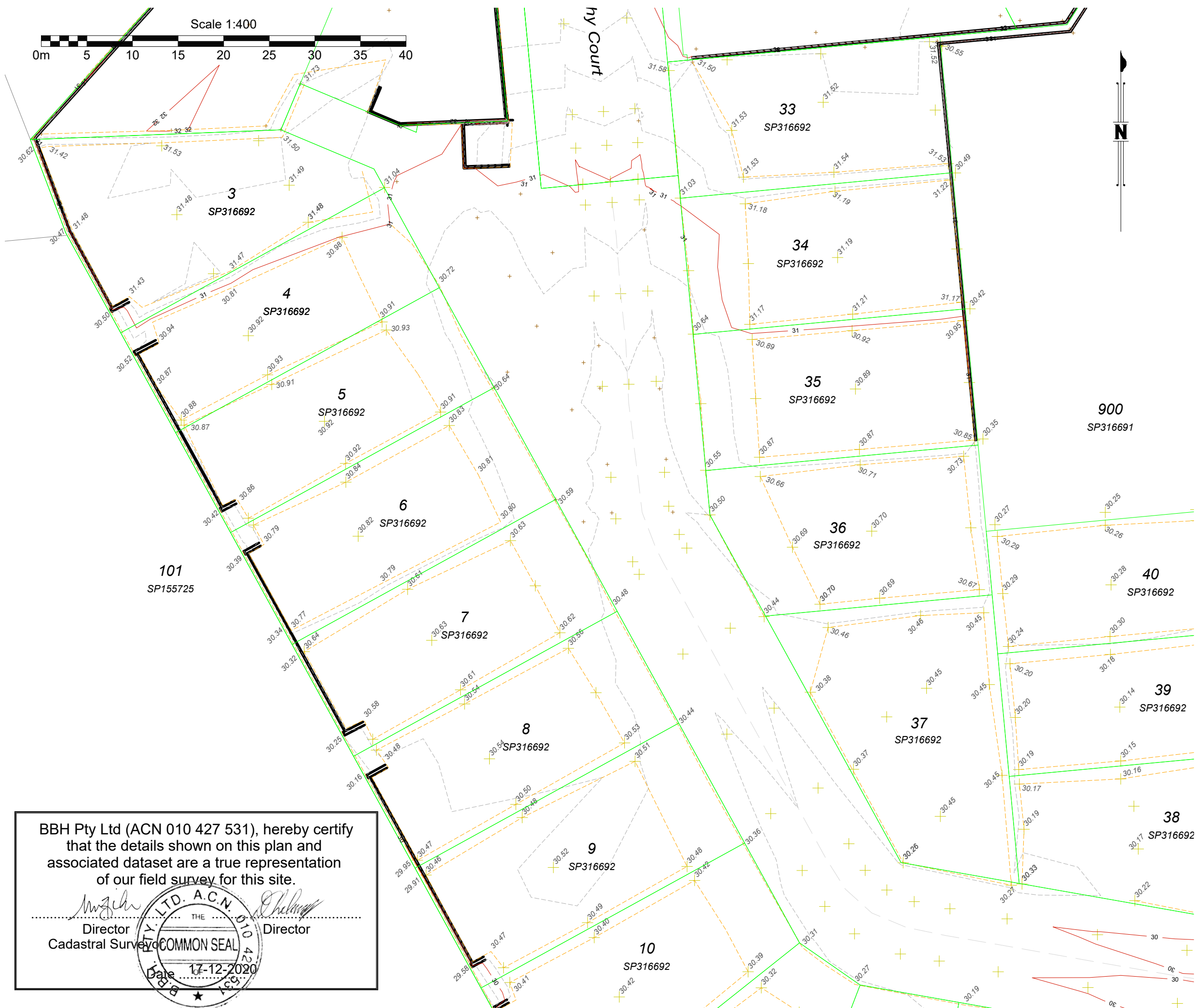
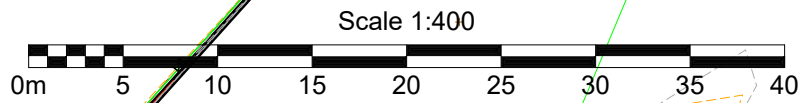
THE COMMON SEAL OF BBH PTY LTD. A.C.N. 010 427 531  
Date: 17-12-2020

- NOTES:
1. Drawn to scale on an A3 sheet.
  3. All levels are in metres on the Australian Height Datum referred to PM106537- RL 29.906m AHD situated at McDowall Bridge, Everton Park
  7. Field Survey Completed on 11/12/2020

Level datum: AHD Derived (PSM106537)  
Horiz datum: PLAN (IS220713)  
Coord Origin: GNSS (Truncated MGA System to match Engineering design)  
GDA System: GDA94 Coordinate System: Plane 1:1  
Meridian: + 0°00' IS220713

Title:  
**Plan of  
Stage 2 As Constructed Lot Levels  
Ashford Residences, Everton Park**

Client:	<b>The Mirvac Group</b>
Locality:	Everton Park
Local Gov:	Brisbane City Council
Surveyed By:	CTN
Approved:	BWM
Date Created:	17/12/20
Scale:	1:750
File Ref:	191518
Plan No:	<b>191518_047_ASC</b>
Rev:	<b>A</b>



**NOTES:**

1. Drawn to scale on an A3 sheet.
3. All levels are in metres on the Australian Height Datum referred to PM106537 - RL 29.906m AHD situated at McDowall Bridge, Everton Park
7. Field Survey Completed on 11/12/2020

Level datum: AHD Derived (PSM106537)  
Horiz datum: PLAN (IS220713)  
Coord Origin: GNSS (Truncated MGA System to match Engineering design v  
GDA System: GDA94 Coordinate System: Plane 1:1  
Meridian: + 0°00' IS220713

Title:

**Plan of  
Stage 2 As Constructed Lot Levels  
Ashford Residences, Everton Park**

Client:	<b>The Mirvac Group</b>
Locality:	Everton Park
Local Gov:	Brisbane City Council
Surveyed By:	CTN
Approved:	BWM
Date Created:	17/12/20
Scale:	1:400
File Ref:	191518
Plan No:	<b>191518_047_ASC</b>
Rev:	<b>A</b>

BBH Pty Ltd (ACN 010 427 531), hereby certify that the details shown on this plan and associated dataset are a true representation of our field survey for this site.

*[Signature]*  
Director  
Cadastral Surveyor  
*[Signature]*  
Director



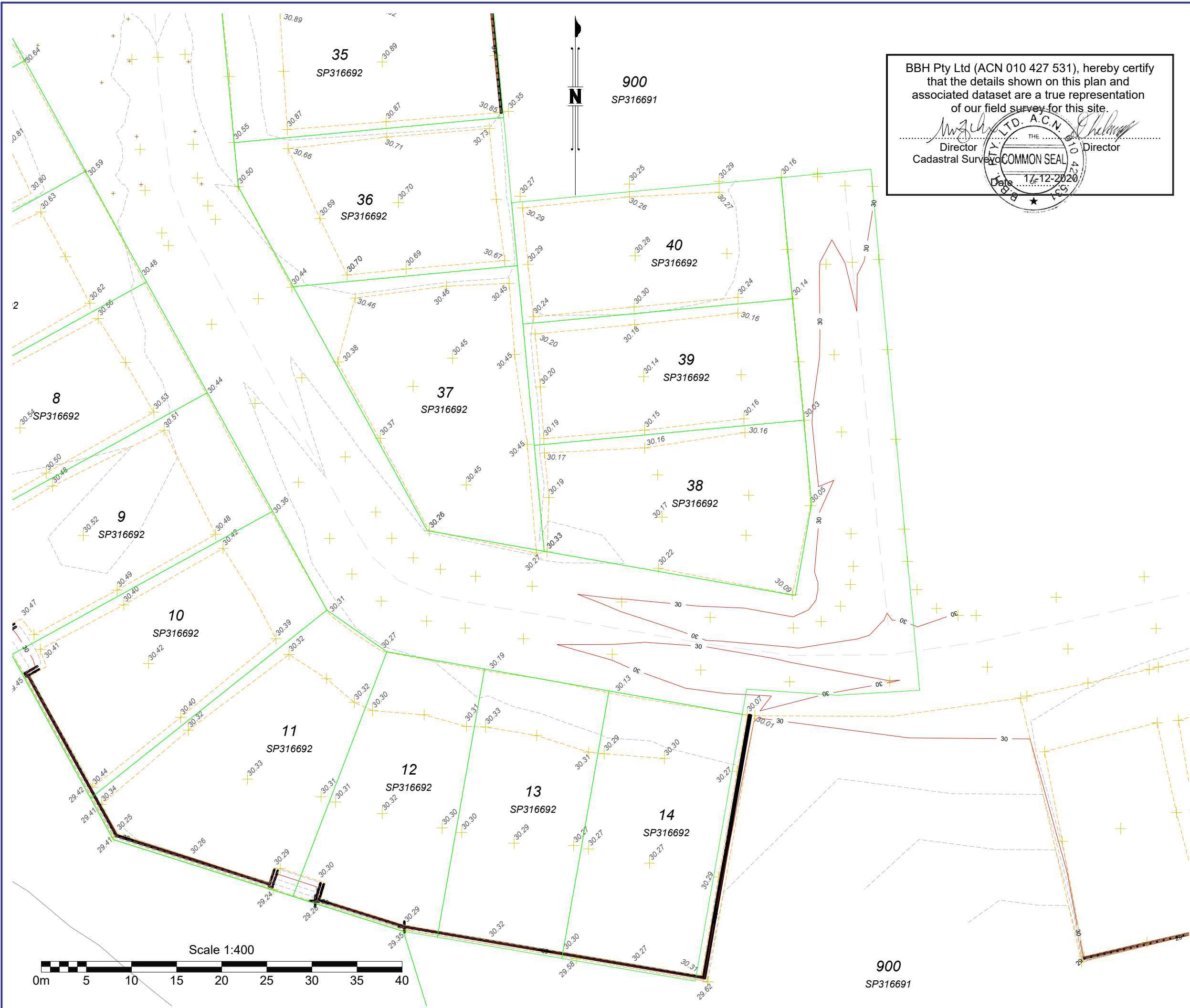
BBH Pty Ltd (ACN 010 427 531), hereby certify that the details shown on this plan and associated dataset are a true representation of our field survey for this site.

Director  
Cadastral Surveyor

Director

COMMON SEAL

Date: 17/12/2020



**NOTES:**

1. Drawn to scale on an A3 sheet.
3. All levels are in metres on the Australian Height Datum referred to PM106537- RL 29.906m AHD situated at McDowall Bridge, Everton Park
7. Field Survey Completed on 11/12/2020

Level datum: AHD Derived (PSM106537)  
Horiz datum: PLAN (IS220713)  
Coord Origin: GNSS (Truncated MGA System to match Engineering design v  
GDA System: GDA94 Coordinate System: Plane 1:1  
Meridian: + 0°00' IS220713

Title:

**Plan of  
Stage 2 As Constructed Lot Levels  
Ashford Residences, Everton Park**

Client:	<b>The Mirvac Group</b>
Locality:	Everton Park
Local Gov:	Brisbane City Council
Surveyed By:	CTN
Approved:	BWM
Date Created:	17/12/20
Scale:	1:400
File Ref:	191518
Plan No:	<b>191518_047_ASC</b>
Rev:	<b>A</b>