

A



## DESCRIPTION

The Fantech Velocity ceiling mounted header box fan features quiet operation and powerful air flow performance. It includes a fully optimised inlet cone and centrifugal impeller that maximises air pressure and ensures rooms are quickly cleared of steam and unpleasant odours. It includes a unique swing clip and removable spigot that makes it very easy to install into a standard 10" round fan cut out.

## Typical Applications

Exhausts from residential or light commercial applications such as toilets, bathrooms, laundries, kitchens and ensuites. Its low profile compact design and side exhaust outlet makes it suitable for mounting between floors and applications with low ceiling heights such as cathedral ceilings.

## Features

- Advanced impeller and housing design provides powerful air flow and minimises noise
- High strength swing clips make installation easy
- Low resistance non-return backdraft damper maximises air flow performance
- Easy to remove diffuser makes cleaning simple
- Can be retrofitted into a standard 10" round fan cut out
- Fitted plug and lead simplifies installation
- Available with a 3 to 15 minute adjustable run-on timer

## Construction

Housing and diffuser are made from injected moulded polypropylene. Fans are forward-curved centrifugal, driven by a squirrel cage motor.

## Motor

Type - squirrel cage induction motor.  
Electricity supply - 230V, single-phase, 50Hz.  
Bearings - sealed for life, ball.  
See pages O-2/3 for details on these motors.

## Internal Thermal Protection

Automatic reset thermal protection is fitted as standard

## Testing

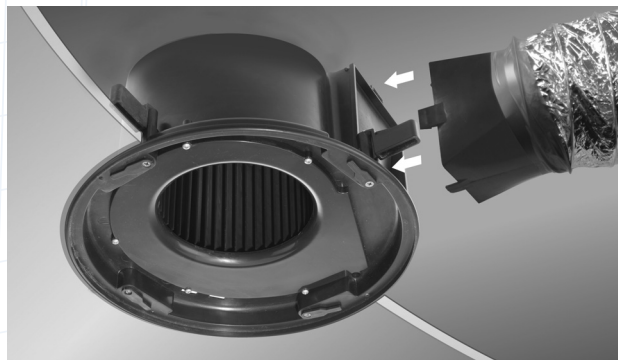
Air flow to ISO5801: 2007  
Noise to ISO3744: 2010

## Special Note

Timer model ECL29-150RDWT includes a plug and lead to suit HPM 4 pin socket.

## SPECIAL FEATURES

### Easy duct connection



*Long clip-in spigot makes installation and duct connection easier.*

### Installation is made easy



*Rotate swing clips to hold fan body in place.*



*Tighten screws so clips clamp onto ceiling board.*

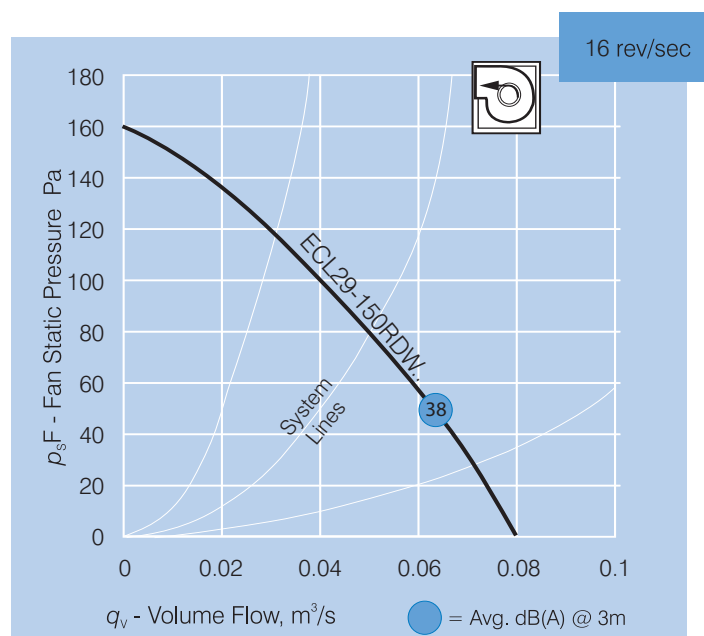
## SUGGESTED SPECIFICATION

The ceiling fans shall be of the Fantech Velocity Header Box Series as designed by Fantech Pty Ltd. and be of the model number shown on the schedule/drawing.

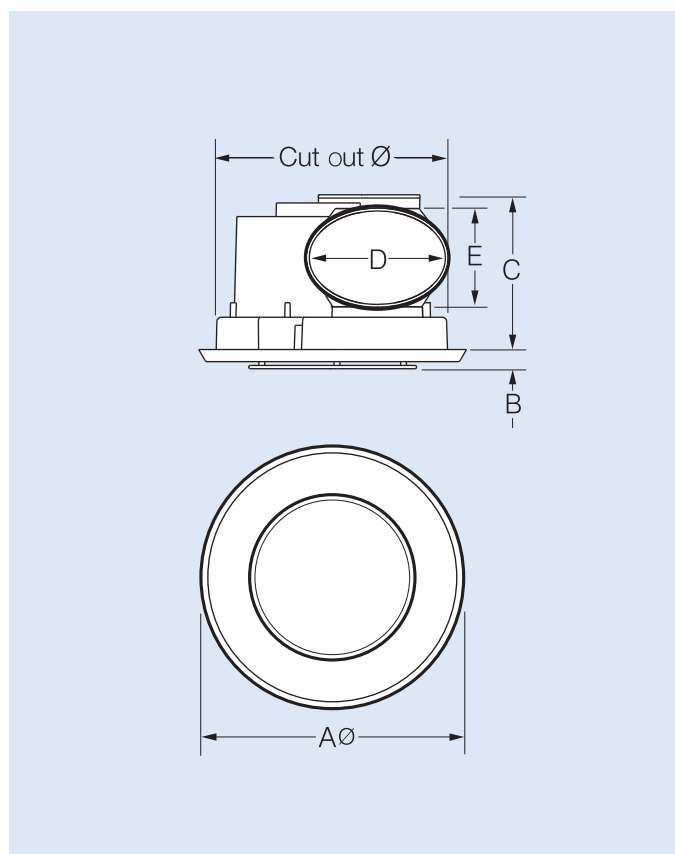
Impellers shall be forward-curved centrifugal and driven by a squirrel cage motor with integral thermal protection. They shall be fitted with high strength swing clips, removable spigot, low resistance non-return backdraft damper and removable diffuser. They shall include a plug and lead, and its housing and diffuser be made of injected moulded polypropylene.

They shall be tested to ISO5801: 2007 for air flow and ISO3744: 2010 for noise.

## PERFORMANCE CURVE



## DIMENSIONS

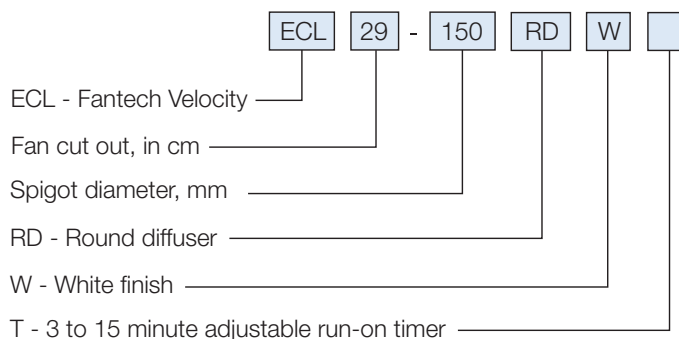


Model Number	Description	Cut out Ø	Dimensions, mm				
		A	B	C	D	E	
ECL29-150RDW..	Round diffuser	290	332	25	192	170	120

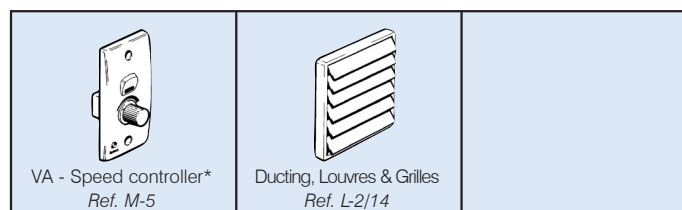
## TECHNICAL DATA

Model Number	Fan Speed rev/sec	Avg. dB(A) @ 3m	Watts	Amps	App. Wt. kg
ECL29-150RDW..	16	38	40	0.17	3

## HOW TO ORDER



## ANCILLARY EQUIPMENT



\* Not suitable for models with run-on timers



1. When supplying goods to a consumer, the following mandated statement applies: "Our goods come with guarantees that cannot be excluded under the Australian Consumer Law. You are entitled to a replacement or refund for a major failure and for compensation for any other reasonably foreseeable loss or damage. You are also entitled to have the goods repaired or replaced if the goods fail to be of acceptable quality and the failure does not amount to a major failure."
2. The benefits of this warranty are in addition to any rights and remedies imposed by Australian State and Federal legislation that cannot be excluded. Nothing in this warranty is to be interpreted as excluding, restricting or modifying any State or Federal legislation applicable to the supply of goods and services which cannot be excluded, restricted or modified.
3. Subject to the conditions and limitation below, the Company warrants products of its manufacture to be free of defects in workmanship and/or materials at the time of delivery to the Buyer.
4. Any part, assembly or portion thereof found to be defective within one year from the date of commissioning or eighteen (18) months from date of shipment from our factory, whichever is the sooner, unless expressly stated otherwise in the Company's Publications or Literature, will be repaired or exchanged F.O.B factory.
5. The Company reserves the right to replace defective parts of the goods with parts and components of similar quality, grade and composition where an identical component is not available.
6. Goods presented for repair may be replaced by refurbished goods of the same type rather than being repaired. Refurbished parts may be used to repair the goods.
7. Goods or parts that have been returned for repair (except where the repair is as a result of the Company's failure to comply with the statutory guarantees in the ACL) or warranty assessment are deemed to have been abandoned by the Buyer if not collected within 30 days after the Company has notified the Buyer in writing of the warranty assessment outcome or the completed repair.
8. The Company reserves the right to dispose or otherwise deal with an abandoned product or part at its discretion.
9. This warranty does not apply if:
  - (i) the goods have not been paid for by the Buyer as per the credit terms provided; or
  - (ii) the goods have not been installed in accordance with AS NZS 3000/2000 Australian/New Zealand Wiring rules; or
  - (iii) the goods have been misused or neglected.
10. The Company assumes no responsibility under this warranty for the labour costs involved in the removal of defective parts, installation of new parts or service charges related thereto.
11. If a fault covered by this warranty occurs, the Buyer must first contact the Company at the contact address on pages ii to v.
12. Any warranty claim must be accompanied by:
  - (i) proof of purchase;
  - (ii) written details of the alleged defect; and
  - (iii) appropriate documentation (such as installation and maintenance records etc).
13. The Company shall have the option of requiring the return of the defective part (transportation prepaid by the Buyer) to establish the claim.
14. The Company makes no warranties or representations other than set out in this clause 7.
15. The repair or exchange of the goods or part of the goods, is the absolute limit of the Company's liability under this express warranty.



Represented by:  
**Fantech Pty. Ltd.**  
 A.B.N. 11 005 434 024  
 45 Nestor Drive  
 Meadowbrook QLD 4131  
 Telephone: +61 (07) 3299 9888  
 Facsimile: +61 (07) 3299 9800  
 E-mail: sales@airdesign.com.au  
 Version 5.6.10 Copyright © 2010-21 Elta Group

## Technical Data - Fan Model ECL29-150RDW

### Location:

### Designation:

#### Performance - Required

Air Flow : 40 L/s  
 Static Pressure : 100 Pa  
 Selection Pressure: 100 Pa  
 Installation Type: n/a  
 Air Density: 1.204 kg/m<sup>3</sup>  
 - Atmos. Temp: 20 °C  
 - Altitude: 0 m  
 - Humidity: 0.0 %

#### Actual

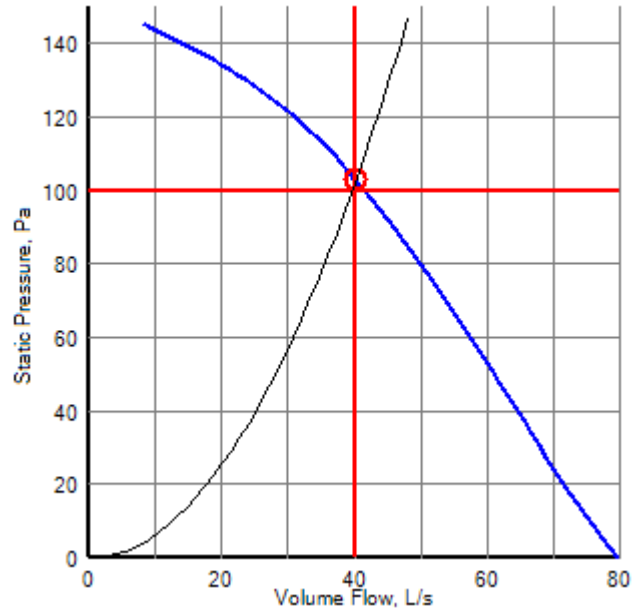
Air Flow: 40 L/s  
 Static Pressure: 103 Pa  
 Total Pressure: 106 Pa

#### Fan Data

Catalogue Code: ECL29-150RDW  
 Description: Velocity Series

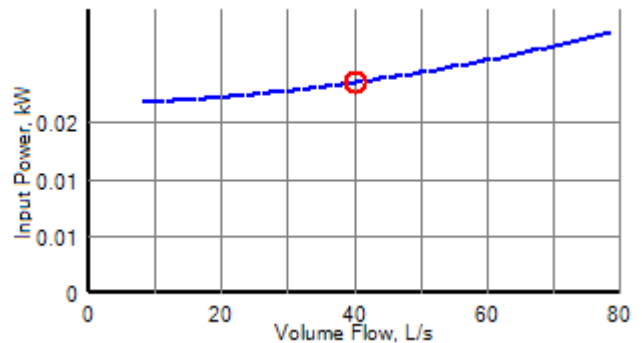
Diameter: 150 mm  
 Impeller Type: Centrifugal  
 Blade Material: -  
 Speed: 950 r/min @50 Hz  
 Power, Abs: -  
 Input Power: 0.02 kW  
 Efficiency Total: -  
 Fan Weight: 3.0 kg

Peak: -  
 Static: -



#### Motor Data (at STP)

Motor Type:  
 Electrical Supply: 220V 1ph 50Hz  
 Motor Frame: 0  
 Motor Power: 0.04kW  
 FLC/Start: 0.16A / 0.48A  
 Motor Speed: 6 pole  
 Motor Efficiency: -



#### Sound Data

Spectrum (Hz):	63	125	250	500	1K	2K	4K	8K	dBW	dB(A) @ 3m
Inlet (dB):	66	66	63	53	55	44	38	31	70	39

Sound levels are quoted as free-field values. dB(A) values are average spherical free-field for comparative use only.

#### Energy Sustainability Data

Hours Per Day:	10	Annual Electricity Cost (\$):	8.9
DaysPerYear:	300	Annual GH Gas (Tonnes):	0.1
CO2 per kWh (kg):	1.467	Annual Carbon Usage (Tonnes):	0.0
Cost per kWh (\$):	0.16		



Represented by:  
**Fantech Pty. Ltd.**  
A.B.N. 11 005 434 024  
45 Nestor Drive  
Meadowbrook QLD 4131  
Telephone: +61 (07) 3299 9888  
Facsimile: +61 (07) 3299 9800  
E-mail: sales@airdesign.com.au  
Version 5.6.10 Copyright © 2010-21 Elta Group

---

## Drawing for Fan Model ECL29-150RDW

---

**Location:**

**Designation:**

