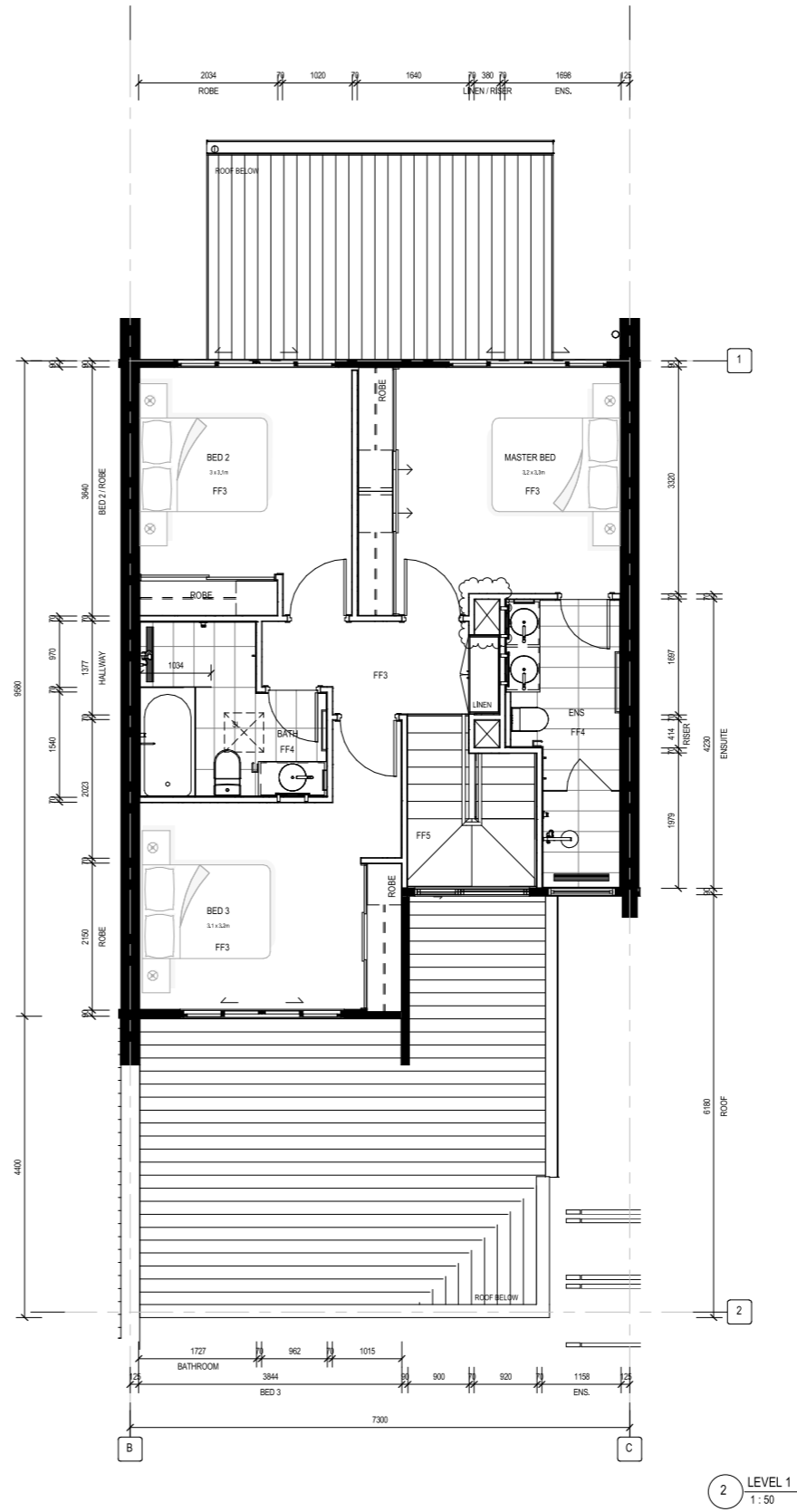
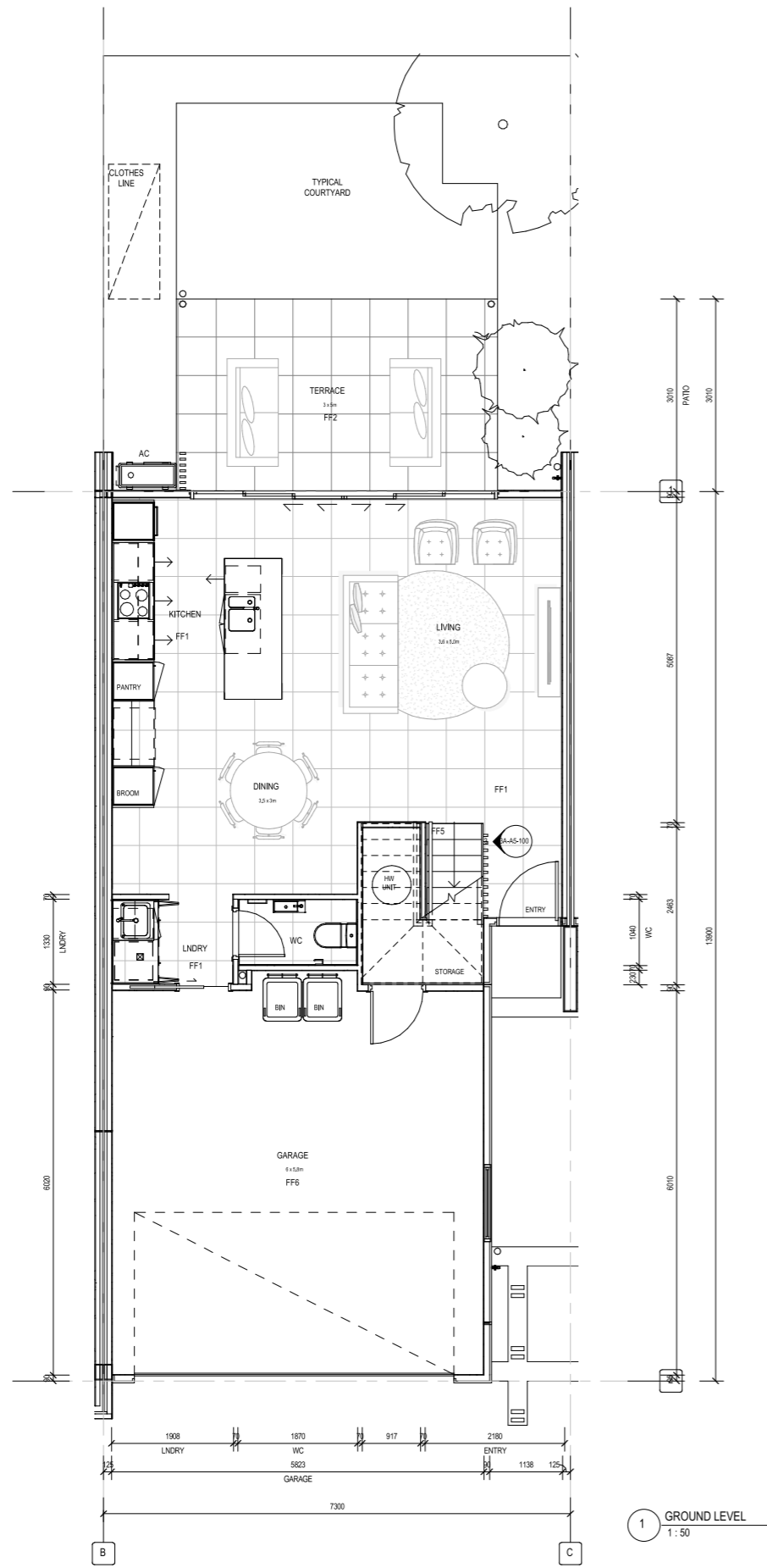


REV	DATE	REASON FOR ISSUE	ISSUED BY
1	09.01.19	FOR REVIEW	DV
2	01.03.19	FOR REVIEW	DV
3	26.07.20	FOR REVIEW	DV
4	09.03.20	FOR REVIEW	DV
5	09.07.20	DRAFT TENDER ISSUE	DV
6	20.07.20	ISSUE FOR TENDER	KS
7	27.07.20	TENDER RFI	EF
8	02.10.20	REVISED FOR TENDER	KS
A	29.07.21	ISSUE FOR REVIEW	DV
B	12.03.21	SERVICES COORDINATION	KS



NOTE: PROVIDE ADDITIONAL TIMBER NOGGINGS TO ALLOW FOR WALL MOUNTED TVS TO LIVING AREA AND MASTER BEDROOM

TOWNHOUSE TYPE - T3A

PROJECT: **ASHFORD RESIDENCES**  
 420 South Pine Road, Everton Park

CLIENT: **Mirvac**

PROJECT NUMBER: **160098**

DRAWING NAME: **GENERAL ARRANGEMENT PLANS**

DRAWING NUMBER: **T3A-A1-100** REVISION: **B**

DRAWING STATUS: **FOR CONSTRUCTION**

DRAWN BY: KS 15/03/2021 9:54:58 AM