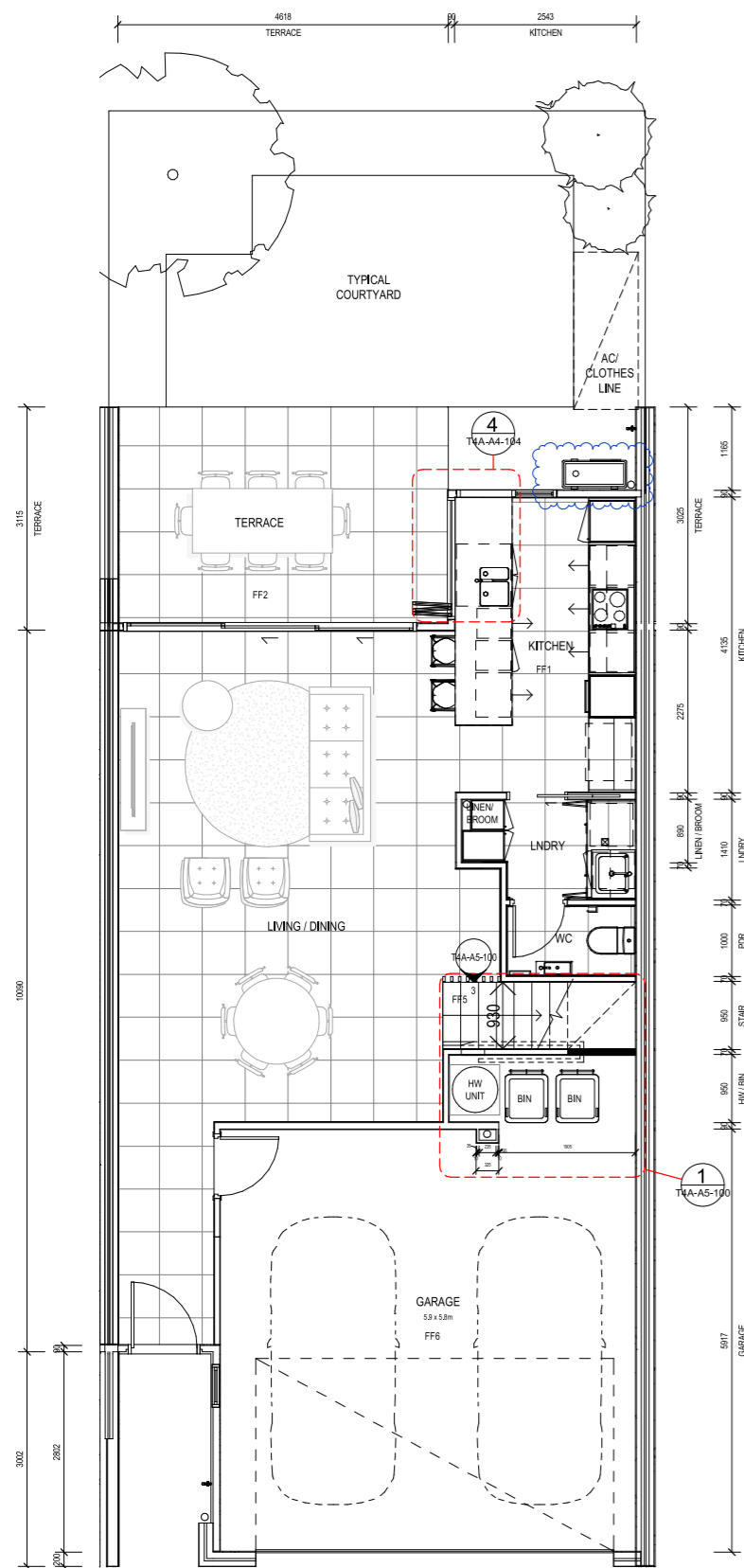
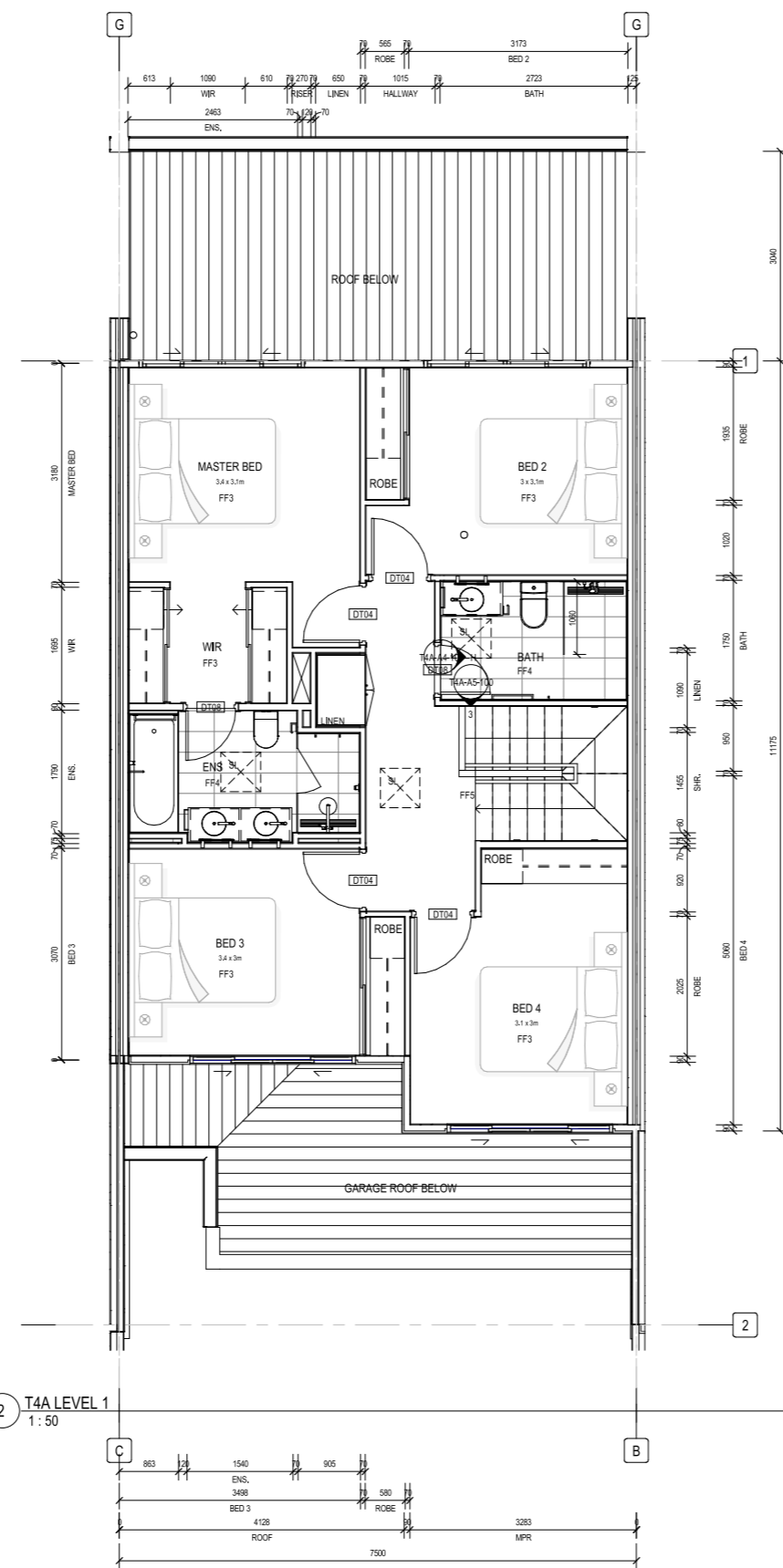
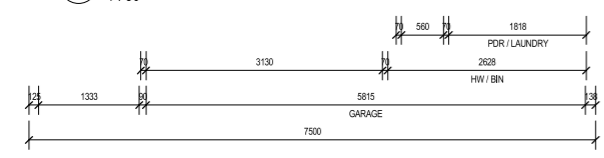


REV	DATE	REASON FOR ISSUE	ISSUED BY
1	09.01.19	FOR REVIEW	DV
2	30.07.20	FOR REVIEW	DV
3	06.03.20	FOR REVIEW	DV
4	09.02.20	DRAFT TENDER ISSUE	DV
5	20.07.20	ISSUE FOR TENDER	KS
6	27.10.20	REMOVED FOR TENDER	EF
7	02.10.20	REMOVED FOR TENDER	DV
A	28.01.21	ISSUE FOR REVIEW	DV
B	24.03.21	REVISED ISSUE	KS
C	25.06.21	AC CONDENSER COORDINATED	KS

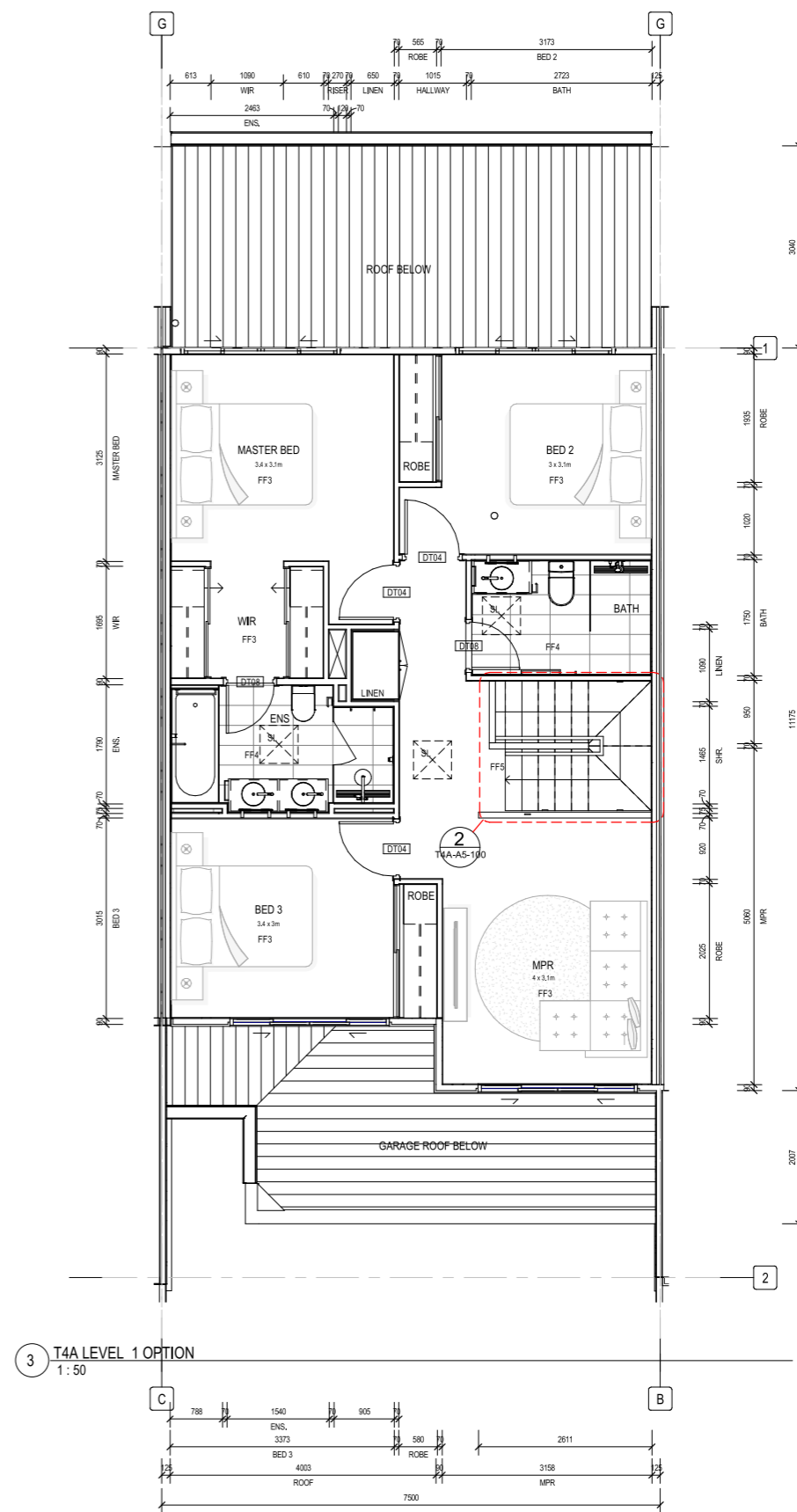
**NOTE: PROVIDE ADDITIONAL TIMBER NOGGINGS TO ALLOW FOR WALL MOUNTED TVS TO LIVING AREA AND MASTER BEDROOM**



1 T4A GROUND LEVEL  
1:50



2 T4A LEVEL 1  
1:50



3 T4A LEVEL 1 OPTION  
1:50

**TOWNHOUSE TYPE - T4A**

SCALE @A1 - 1:50

PROJECT

**ASHFORD RESIDENCES**

420 SOUTH PINE ROAD, EVERTON PARK

CLIENT

**MIRVAC**

PROJECT NUMBER

**160098**

DRAWING NAME

**GENERAL ARRANGEMENT PLAN**

DRAWING NUMBER

**T4A-A1-100**

REVISION

**C**

DRAWING STATUS

**FOR CONSTRUCTION**

DRAWN BY: KS 25/06/2021 5:23:23 PM