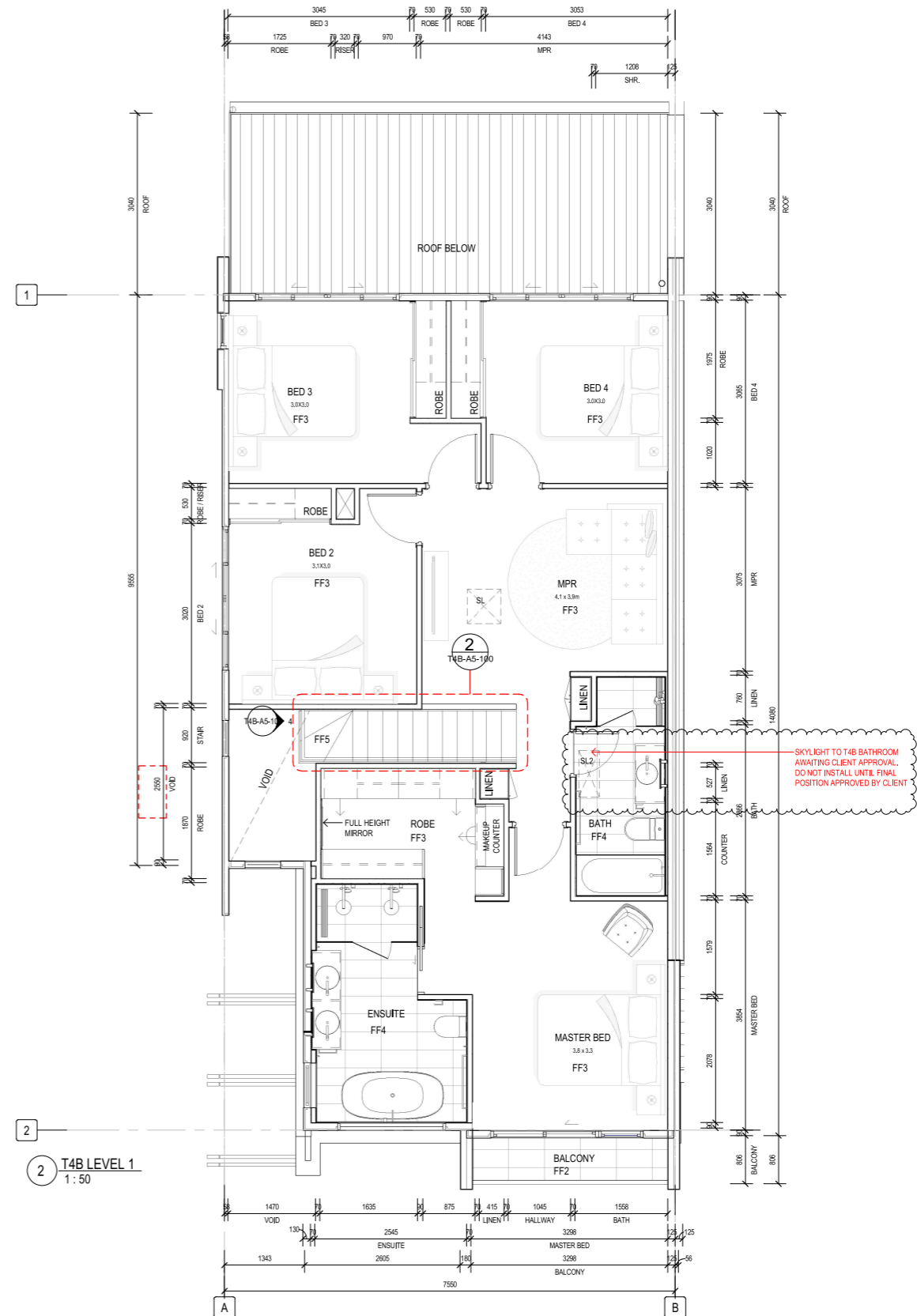
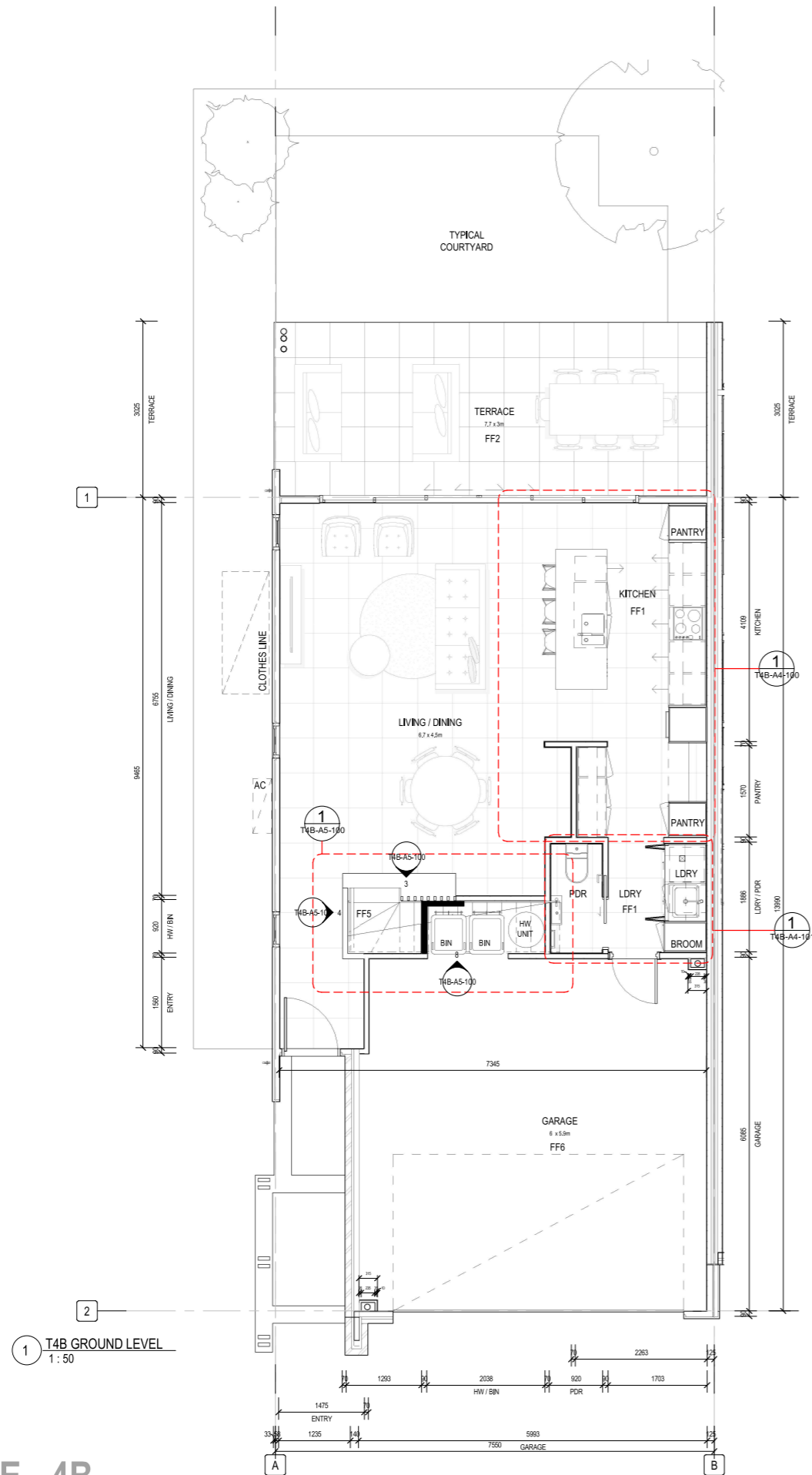


# TOWNHOUSE TYPE - 4B



**NOTE: PROVIDE ADDITIONAL TIMBER NOGGINGS TO ALLOW FOR WALL MOUNTED TVS TO LIVING AREA AND MASTER BEDROOM**

Verify dimensions on site before commencing any work or producing shop drawings. These drawings are protected by the laws of copyright and may not be copied or reproduced without the prior written consent of Elivo Architects.

REV	DATE	REASON FOR ISSUE	ISSUED BY
1	09.21.19	FOR REVIEW	DV
2	01.01.19	FOR REVIEW	DV
3	29.01.20	FRO REVIEW	DV
4	09.03.20	FOR REVIEW	DV
5	02.04.20	FOR REVIEW	DV
6	09.07.20	DRAFT TENDER ISSUE	DV
7	20.07.20	ISSUE FOR TENDER	KS
8	22.07.20	ISSUE FOR TENDER	KS
9	27.07.20	TENDER #11	SE
10	02.10.20	REVISED FOR TENDER	KS
A	29.01.21	ISSUE FOR REVIEW	DV
B	25.02.21	ISSUE FOR REVIEW	KS
C	12.03.21	SERVICES COORDINATION	KS
D	21.05.21	COORDINATED ISSUE	KS

SCALE @A1 - 1:50

PROJECT  
**ASHFORD RESIDENCES**  
420 SOUTH PINE ROAD, EVERTON PARK

CLIENT  
**MIRVAC**

PROJECT NUMBER  
**160098**

DRAWING NAME  
**GENERAL ARRANGEMENT PLAN**

DRAWING NUMBER  
**T4B-A1-100**

REVISION  
**D**

DRAWING STATUS  
**FOR CONSTRUCTION**

DRAWN BY: KS 21/05/2021 2:49:22 PM