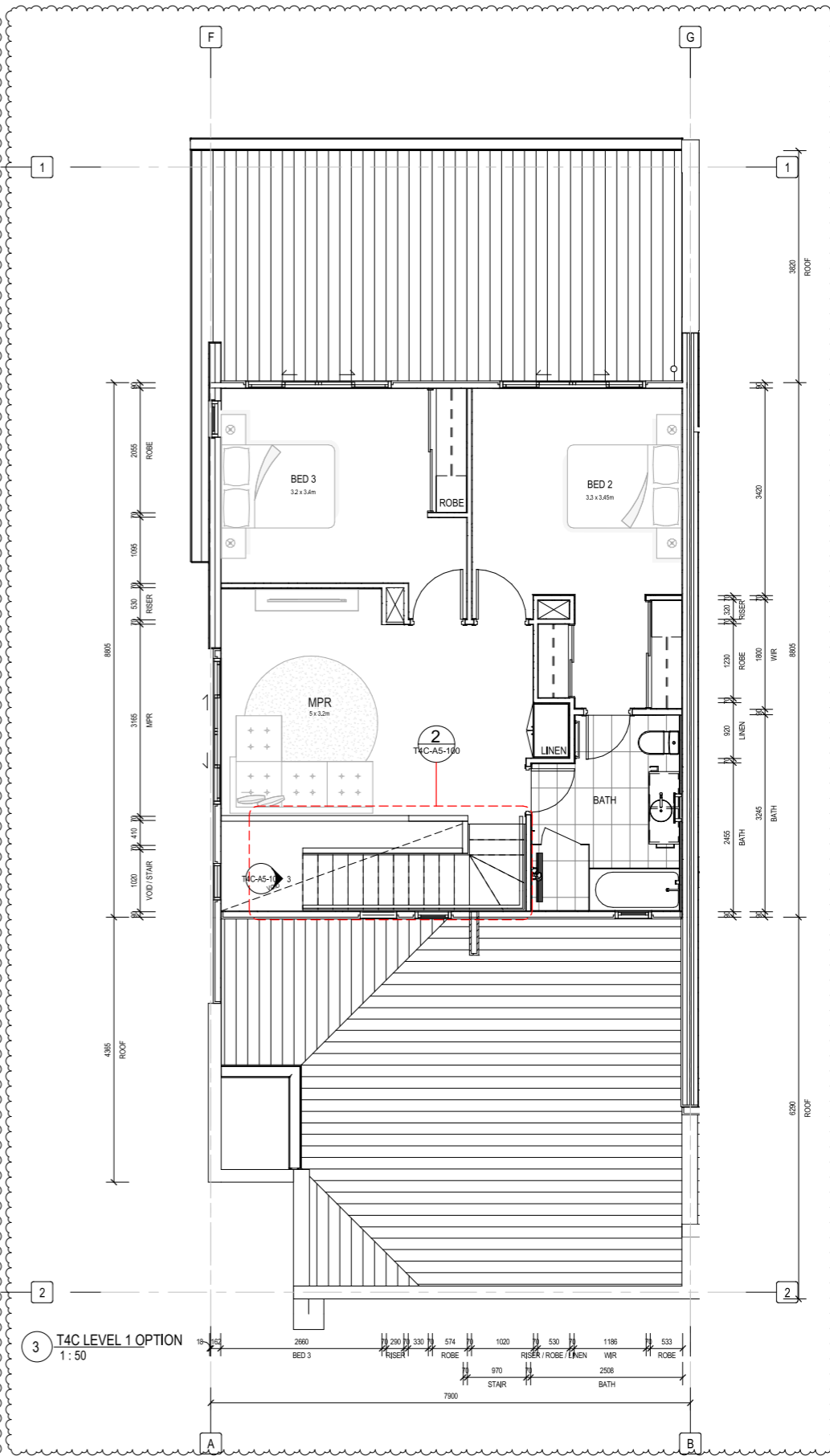
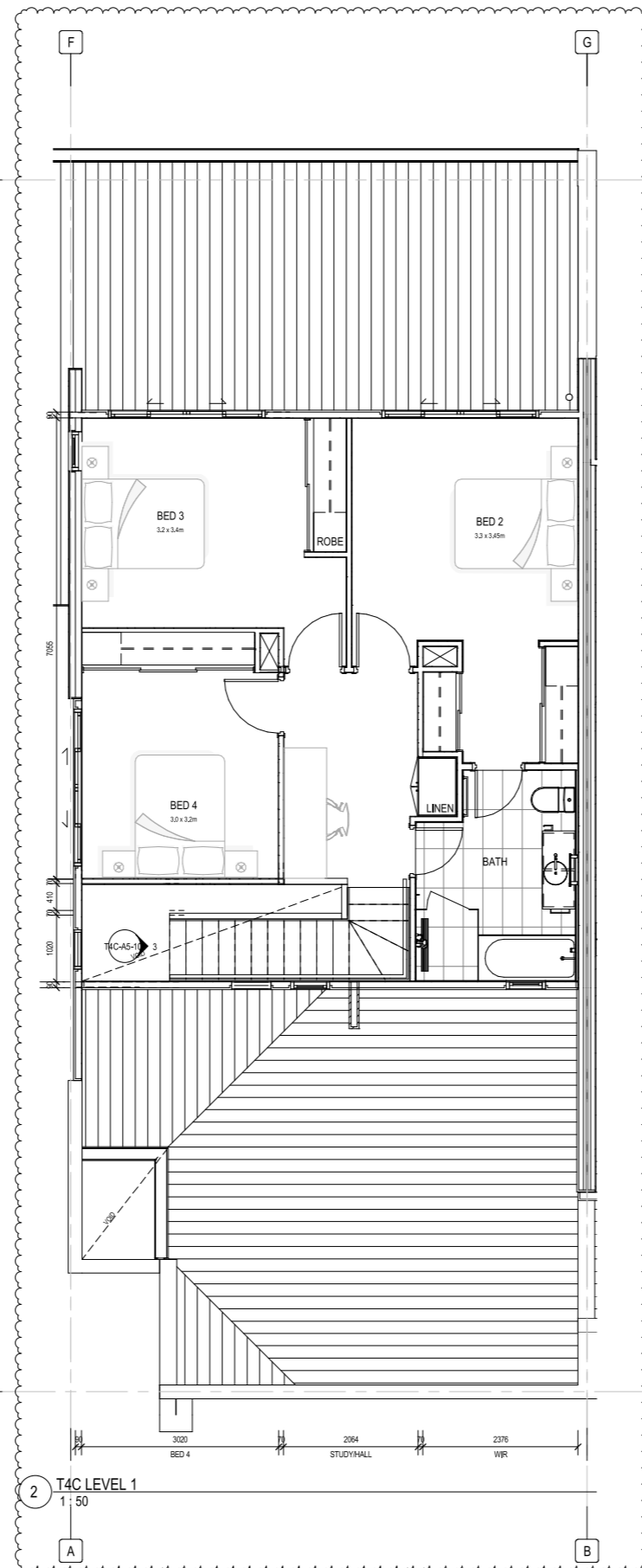
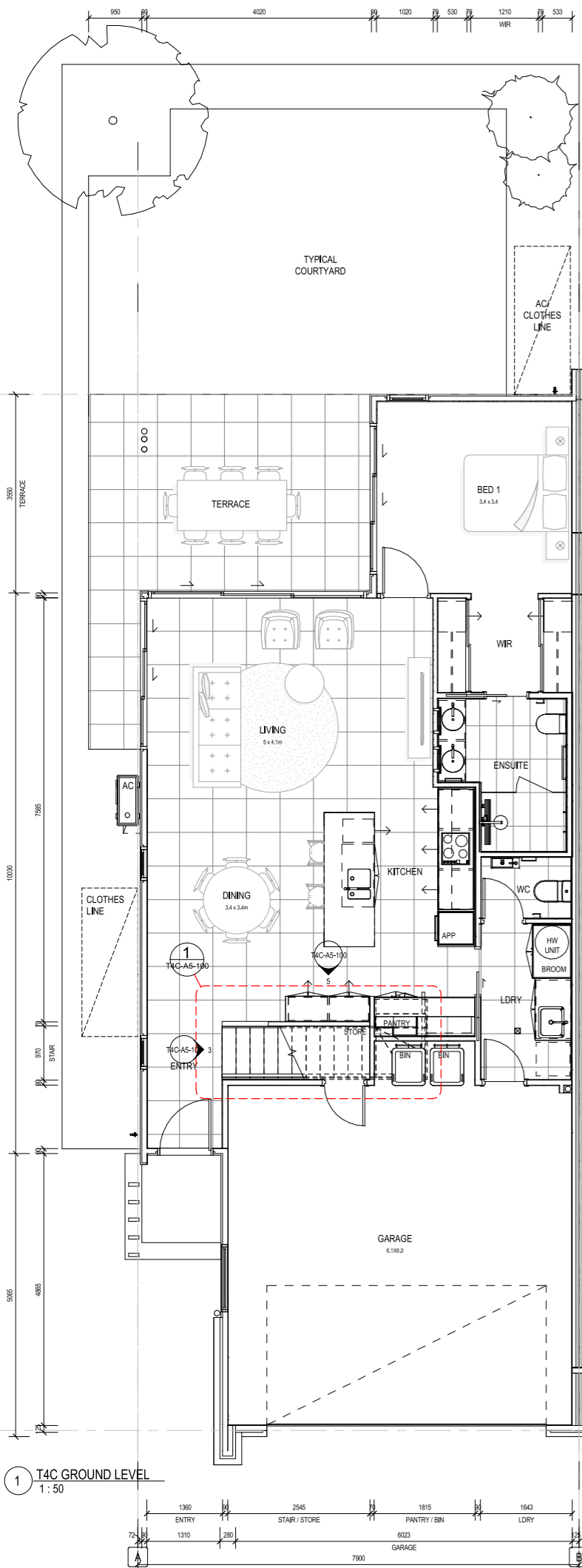


TOWNHOUSE TYPE - T4C

NOTE: PROVIDE ADDITIONAL TIMBER NOGGINGS TO ALLOW FOR WALL MOUNTED TVS TO LIVING AREA AND MASTER BEDROOM



REV	DATE	REASON FOR ISSUE	ISSUED BY
1	10.04.17	PRELIM ISSUE	DV
2	16.05.17	PRELIM ISSUE	NS
3	09.01.18	FOR REVIEW	DV
4	01.03.19	FOR REVIEW	DV
5	29.01.20	FOR REVIEW	DV
6	09.03.20	FOR REVIEW	DV
7	09.07.20	DRAFT TENDER ISSUE	DV
8	20.07.20	ISSUE FOR TENDER	AM
9	27.07.20	TENDER #11	EF
10	02.10.20	RENISED FOR TENDER	KS
A	29.01.21	ISSUE FOR REVIEW	DV
B	12.03.21	SERVICES COORDINATED	KS
C	15.03.21	RENISED ISSUE	KS
D	23.03.21	RENISED ISSUE	KS
E	24.03.21	RENISED ISSUE	KS

SCALE @A1 - 1:50

PROJECT
ASHFORD RESIDENCES
420 SOUTH PINE ROAD, EVERTON PARK

CLIENT
MIRVAC

PROJECT NUMBER
160098

DRAWING NAME
GENERAL ARRANGEMENT PLAN

DRAWING NUMBER
T4C-A1-100

DRAWING STATUS
FOR CONSTRUCTION

DRAWN BY: DVNS 24/03/2021 4:16:49 PM