

BBH Pty Ltd (ACN 010 427 531), hereby certify that the details shown on this plan and associated dataset are a true representation of our field survey for this site.

*[Signature]*  
 Director  
 Cadastral Survey  
 THE COMMON SEAL  
 Date: 17.12.2020



- NOTES:
1. Drawn to scale on an A3 sheet.
  3. All levels are in metres on the Australian Height Datum referred to PM106537 - RL 29.906m AHD situated at McDowall Bridge, Everton Park
  7. Field Survey Completed on 11/12/2020

Level datum: AHD Derived (FSM106537)  
 Horiz datum: PLAN (BS20713)  
 Coord Origin: GDA84 (Truncated MGA System to match Engineering design)  
 A System: GDA84 (Truncated MGA System, Plane 1)  
 Meridian: 150°00' (BS20713)

Title:  
**Plan of  
 Stage 2 As Constructed Lot Levels  
 Ashford Residences, Everton Park**

Client:	The Mirvac Group
Locality:	Everton Park
Local Gov:	Brisbane City Council
Surveyed By:	CTN
Approved:	BWM
Date Created:	17/12/20
Scale:	1:750
File Ref:	191518
Plan No.:	191518_047_ASC
Rev:	A

**NOTES:**

1. Drawn to scale on an A3 sheet.
3. All levels are in metres on the Australian Height Datum referred to PM106537- RL 29.906m AHD situated at McDowell Bridge, Everton Park
7. Field Survey Completed on 11/12/2020

Level datum: AHD Derived (FSMT106537)  
 Horiz datum: PLAN (BS220713)  
 Coord Origin: GRS80 (Truncated MGA System to match Engineering design)  
 A 3-Dimensional Cartesian Coordinate System. Plane 11  
 Meridian: + 0°00'BS220713

Title:

**Plan of  
 Stage 2 As Constructed Lot Levels  
 Ashford Residences, Everton Park**

Client:	<b>The Mirvac Group</b>
Locality:	Everton Park
Local Gov:	Brisbane City Council
Surveyed By:	CTN
Approved By:	BWM
Date Created:	17/12/20
Scale:	1:400
File Ref:	191518
Plan No.:	191518_047_ASC
Rev:	A

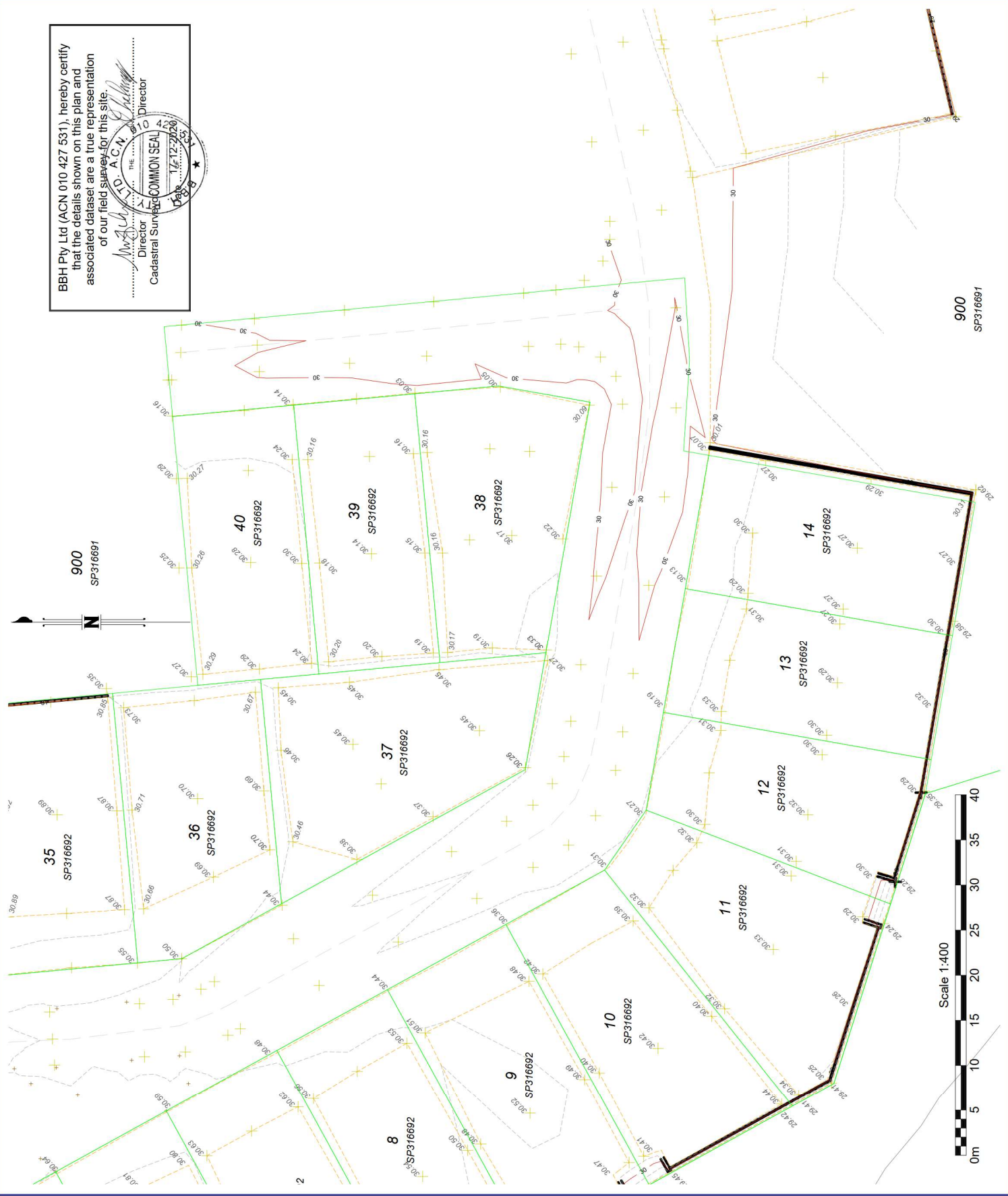


BBH Pty Ltd (ACN 010 427 531), hereby certify that the details shown on this plan and associated dataset are a true representation of our field survey for this site.

*[Signature]*  
 Director  
 Cadastral Survey  
 THE COMMONS SEAL  
 17-12-2020  
 191518

BBH Pty Ltd (ACN 010 427 531) hereby certify that the details shown on this plan and associated dataset are a true representation of our field survey for this site.

*M. J. Bennett*  
 Director  
 L.D. A.C.N. 117 222 200  
 COMMON SEAL  
 17/12/20



900  
 SP316691

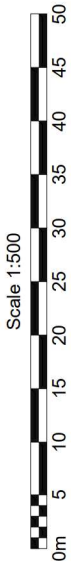
**NOTES:**

1. Drawn to scale on an A3 sheet.
3. All levels are in metres on the Australian Height Datum referred to PM106537- RL 29.906m AHD situated at McDowall Bridge, Everton Park
7. Field Survey Completed on 11/12/2020

Level datum: AHD Derived (FSMT106537)  
 Horiz datum: PLAN (BS220713)  
 Coord Origin: GRS83 (Truncated MGA System to match Engineering design)  
 Spheroid: Everest / Everest  
 Meridian: 150°00'BS220713

Title:  
**Plan of  
 Stage 2 As Constructed Lot Levels  
 Ashford Residences, Everton Park**

Client:	The Mirvac Group
Locality:	Everton Park
Local Gov:	Brisbane City Council
Surveyed By:	CTN
Approved:	BWM
Date Created:	17/12/20
Scale:	1:400
File Ref:	191518_047_ASC
Plan No.:	191518_047_ASC
Rev:	A

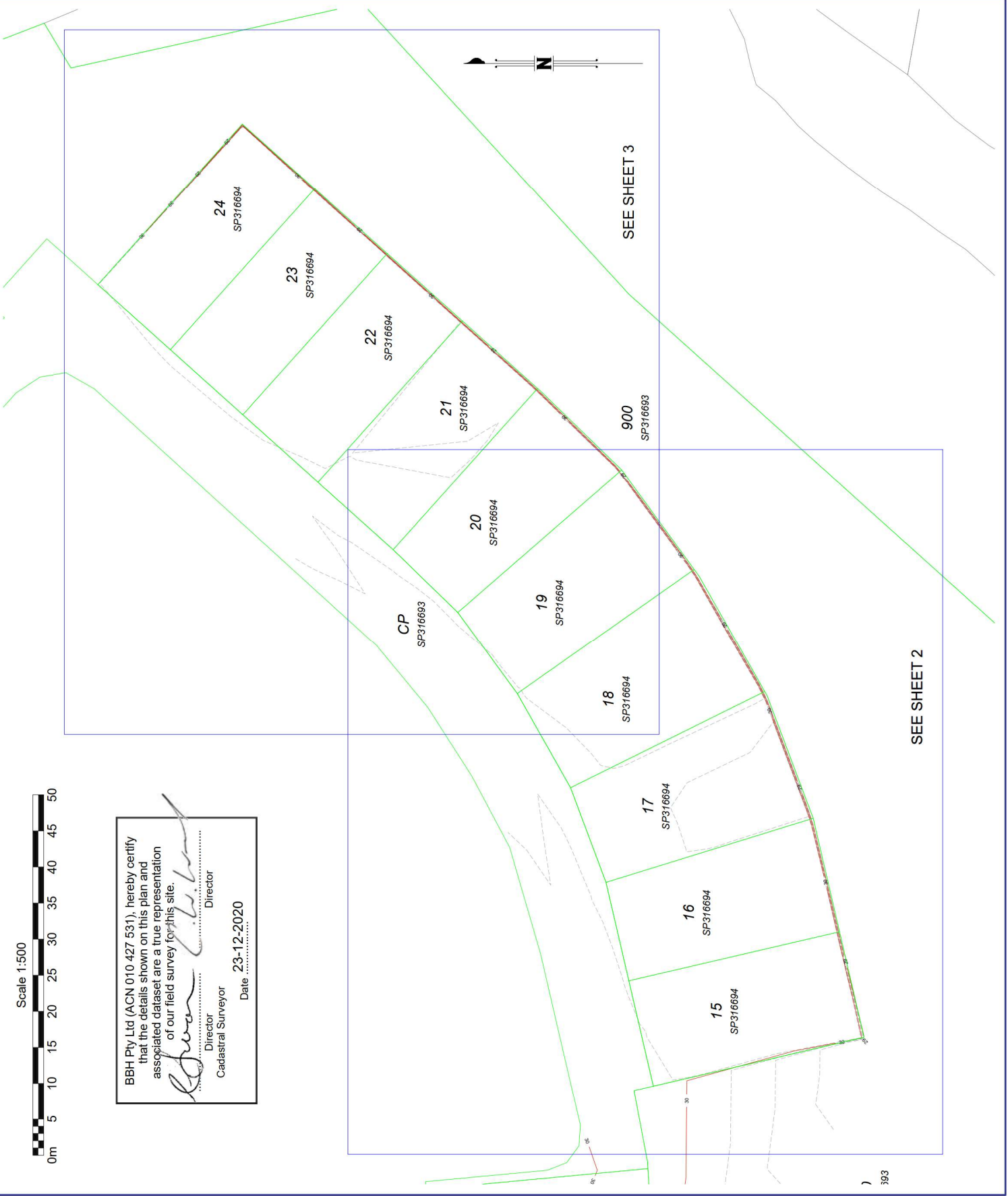


BBH Pty Ltd (ACN 010 427 531), hereby certify that the details shown on this plan and associated dataset are a true representation of our field survey for this site.

*[Signature]*  
 Director

*[Signature]*  
 Director  
 Cadestral Surveyor

Date 23-12-2020



NOTES:  
 1. Drawn to scale on an A3 sheet.  
 3. All levels are in metres on the Australian Height Datum referred to PM106537- RL 29.906m AHD situated at McDowell Bridge, Everton Park  
 7. Field Survey Completed on 17/12/2020

Level datum: AHD Derived (PSMT106537)  
 Horiz datum: PLAN (IS220713)  
 Coord Origin: GRS83 (Truncated MGA System to match Engineering design)  
 CR: State Plane MGA Coordinate System, Plane 11  
 Meridian: 150°00' (IS220713)

Title:  
**Plan of Stage 3**  
**As Constructed Lot Levels**  
**Ashford Residences, Everton Park**

Client:	The Mirvac Group
Locality:	Everton Park
Local Gov:	Brisbane City Council
Surveyed By:	CTN
Approved:	BWM
Date Created:	23/12/20
Scale:	1:500
File Ref:	191518_048_ASC
Plan No.:	191518_048_ASC
Rev:	A



**NOTES:**

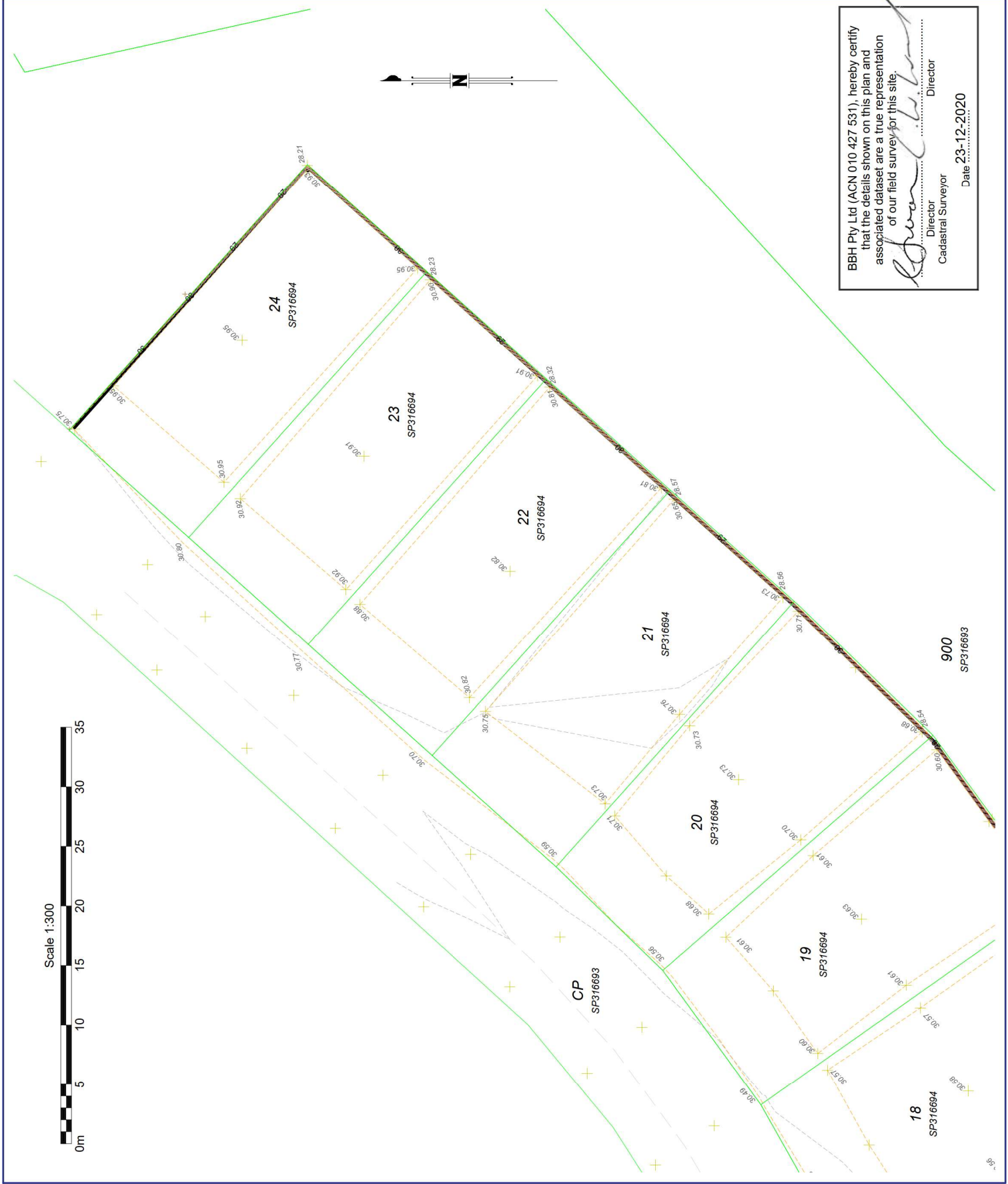
1. Drawn to scale on an A3 sheet.
3. All levels are in metres on the Australian Height Datum referred to PM106537- RL 29.906m AHD situated at McDowall Bridge, Everton Park
7. Field Survey Completed on 17/12/2020

Level datum: AHD Derived (FSMT106537)  
 Horiz datum: PLAN (BS220713)  
 Coord Origin: GRS83 (Truncated MGA System to match Engineering design)  
 Proj: State Plane Coordinate System, Plane 11  
 Meridian: 150°00'BS220713

Title:

**Plan of Stage 3  
 As Constructed Lot Levels  
 Ashford Residences, Everton Park**

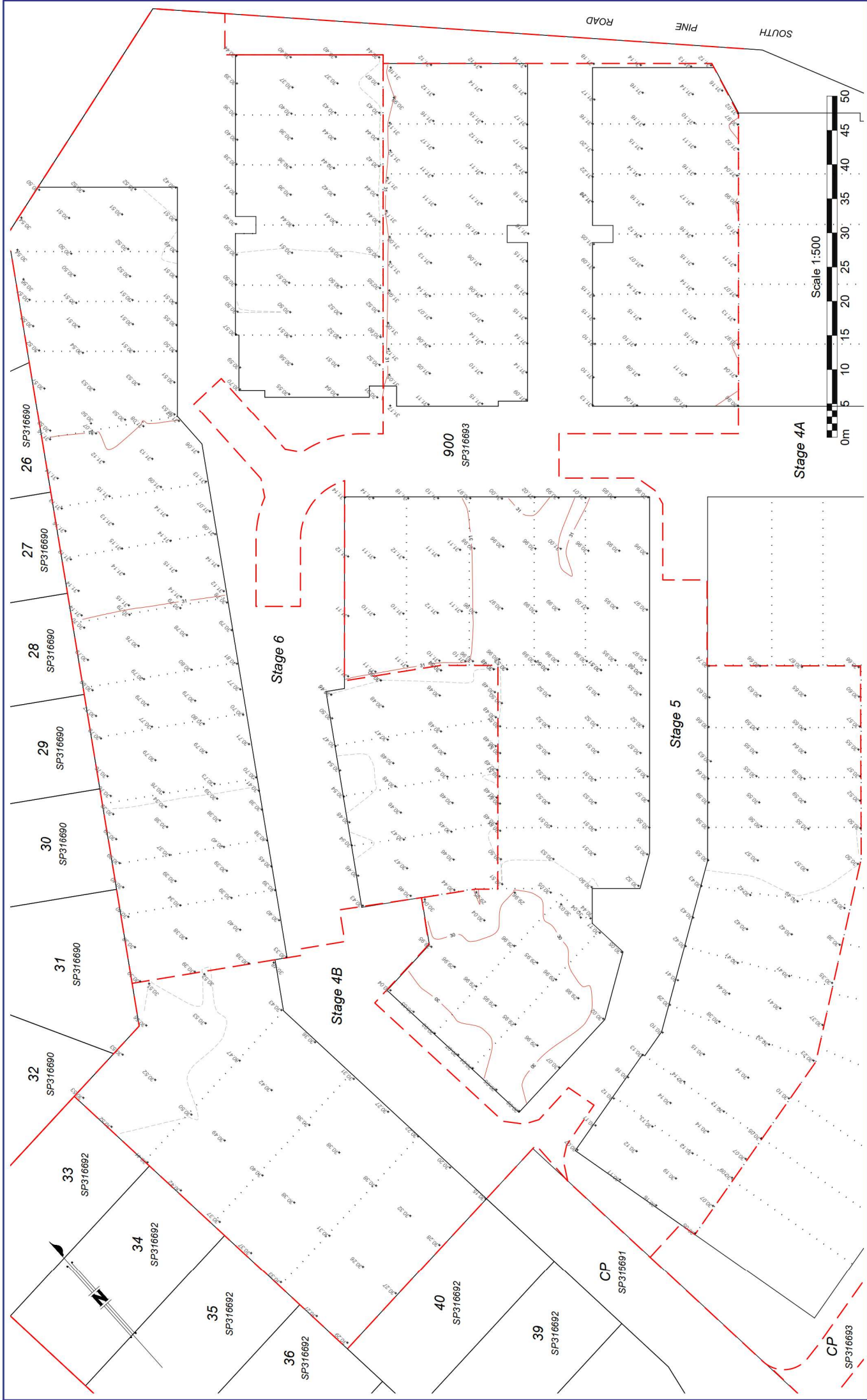
Client:	The Mirvac Group
Locality:	Everton Park
Local Gov:	Brisbane City Council
Surveyed By:	CTN
Approved:	BWM
Date Created:	23/12/20
Scale:	1:300
File Ref:	191518_048_ASC
Plan No.:	191518_048_ASC
Rev:	A



BBH Pty Ltd (ACN 010 427 531), hereby certify that the details shown on this plan and associated dataset are a true representation of our field survey for this site.

*[Signature]*  
 Director  
 Cadastral Surveyor

Date: 23.12.2020



BBH Pty Ltd (ACN 107 427 631), hereby certify that the depicted drawings, this plan and associated information are a true and accurate representation of our best professional judgment.

*[Signature]*  
 Director  
 Cadastrol Surveyors  
 Date: 10/05/2021

NOTES:  
 1. Drawn to scale on an A3 sheet  
 2. Contour interval: 0.5m  
 3. All levels are in metres on the Australian Height datum referred to PM119537-RL 29.90m AHD, situated at McDowall Bridge, Everton Park.  
 4. All dimensions are void title and subject to confirmation by survey.