

Ashford Terraces CTS 55116

FORM 20 Version 2
Land Title Act 1994, Land Act 1994
and Water Act 2000

SCHEDULE E

QUEENSLAND LAND REGISTRY CMS

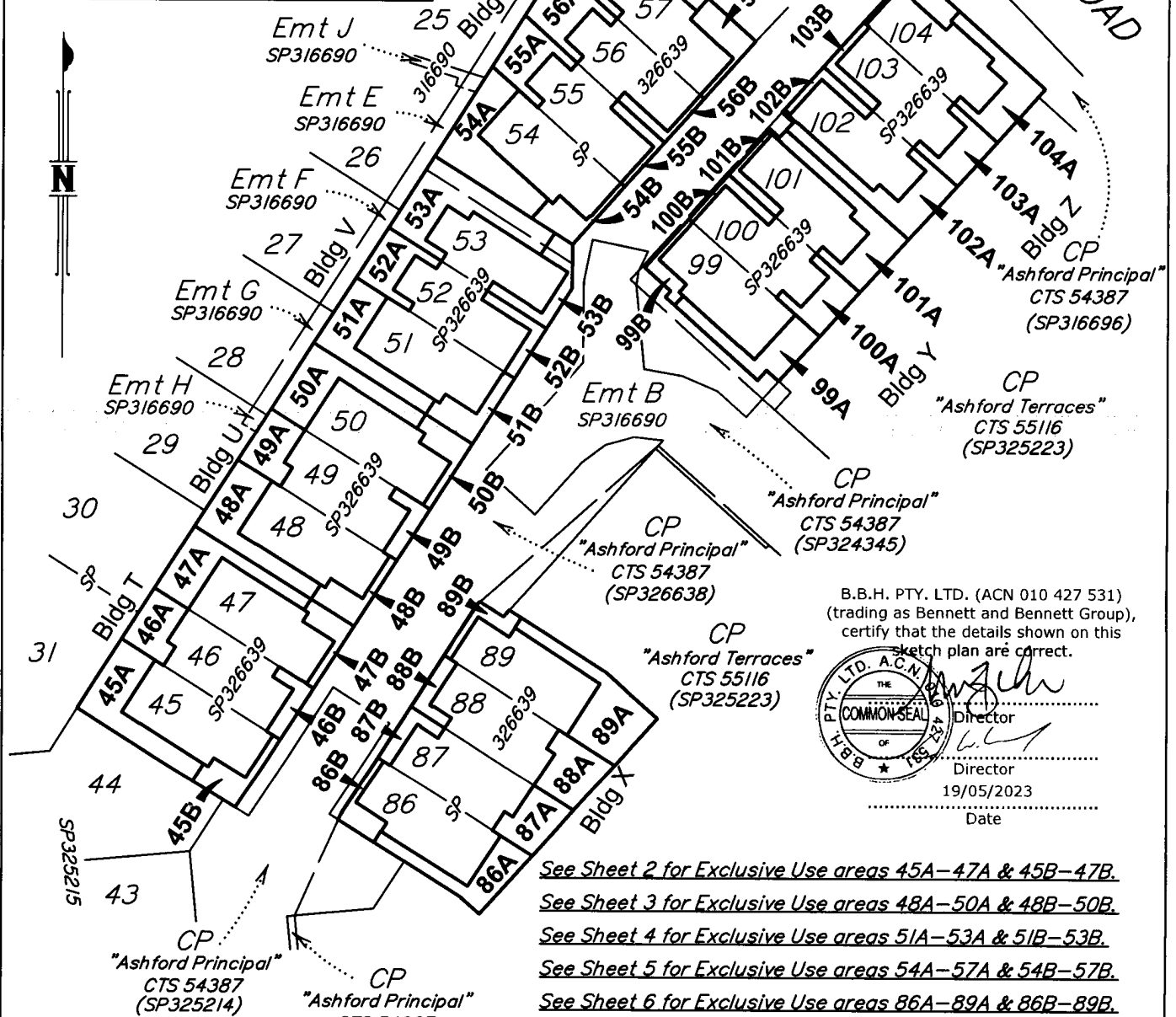
Sheet	of
89	96
Plan	Sheet
1	of
	8

PLAN D

EXCLUSIVE USE PLAN

"ASHFORD TERRACES" CTS 55116

Level A (Ground Level)



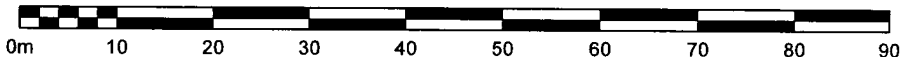
B.B.H. PTY. LTD. (ACN 010 427 531)
(trading as Bennett and Bennett Group),
certify that the details shown on this
sketch plan are correct.



Director
Director
19/05/2023
Date

- See Sheet 2 for Exclusive Use areas 45A-47A & 45B-47B.
- See Sheet 3 for Exclusive Use areas 48A-50A & 48B-50B.
- See Sheet 4 for Exclusive Use areas 51A-53A & 51B-53B.
- See Sheet 5 for Exclusive Use areas 54A-57A & 54B-57B.
- See Sheet 6 for Exclusive Use areas 86A-89A & 86B-89B.
- See Sheet 7 for Exclusive Use areas 99A-101A & 99B-101B.
- See Sheet 8 for Exclusive Use areas 102A-104A & 102B-104B.

Scale 1:750



- Notes:
1. Drawn to scale on A4 sheet.
 2. Community Titles Scheme . . . "ASHFORD TERRACES" CTS 55116
 3. Services located in exclusive use areas are not covered by exclusive use entitlement.
 4. Meridian of SP326639.
 5. Revision D: Plan updated 18/5/2023. (SDS)

BENNETT + BENNETT
PO Box 5021, GCMC QLD 9726
Ph: (07) 5631 8000
mail@bennettandbennett.com.au
Surveying, Town Planning & Spatial Services
GOLD COAST | BRISBANE | SUNSHINE COAST | NORTHERN RIVERS
www.bennettandbennett.com.au

Title:
**Plan of Exclusive Use Areas 45A-57A,
86A-89A, 99A-104A, 45B-57B,
86B-89B & 99B-104B**
in part of the Common Property on
Level A (Ground Level) on SP326639
"ASHFORD TERRACES" CTS 55116

Client: **MIRVAC**
Locality: EVERTON PARK
Local Gov: BCC Prepared By: SDS
Surveyed By: RL Approved: BWM
Date Created: 8/7/2021 Scale: 1:750
Comp File: 191518.project
Plan No: **191518_063_EXC**

Ashford Terraces CTS 55116

FORM 20 Version 2
Land Title Act 1994, Land Act 1994
and Water Act 2000

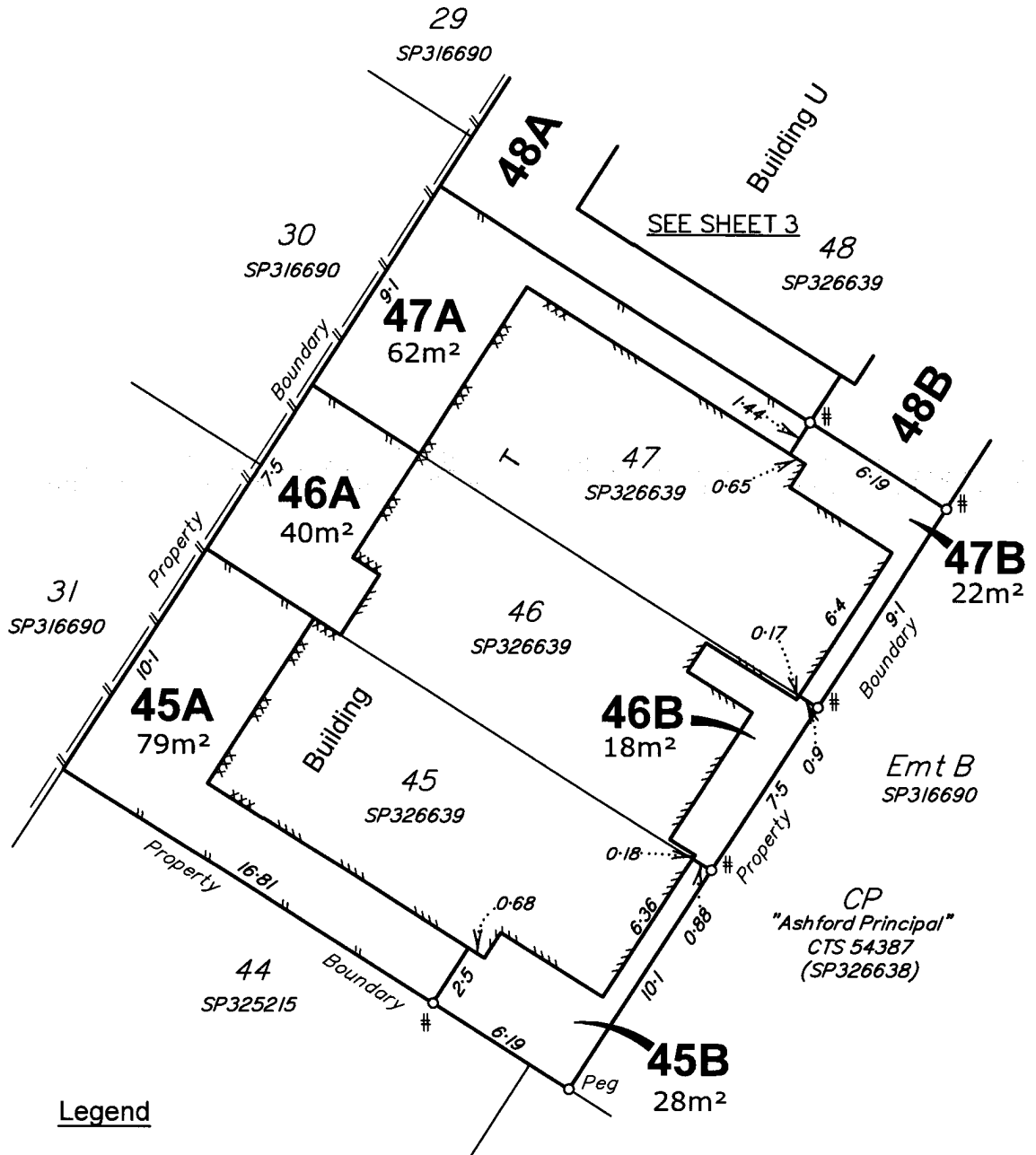
SCHEDULE E

QUEENSLAND LAND REGISTRY CMS

Sheet	of
90	96
Plan	Sheet
2	8

PLAN D - EXCLUSIVE USE PLAN

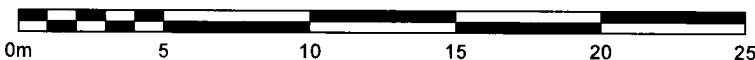
"ASHFORD TERRACES" CTS 55116



Legend

- # Denotes dumpy peg placed at corner
- ▬ Denotes boundary along concrete edge
- ▬ Denotes boundary along fence
- ▬ Denotes boundary along face of wall

Scale 1:250



Ashford Terraces CTS 55116

FORM 20 Version 2
Land Title Act 1994, Land Act 1994
and Water Act 2000

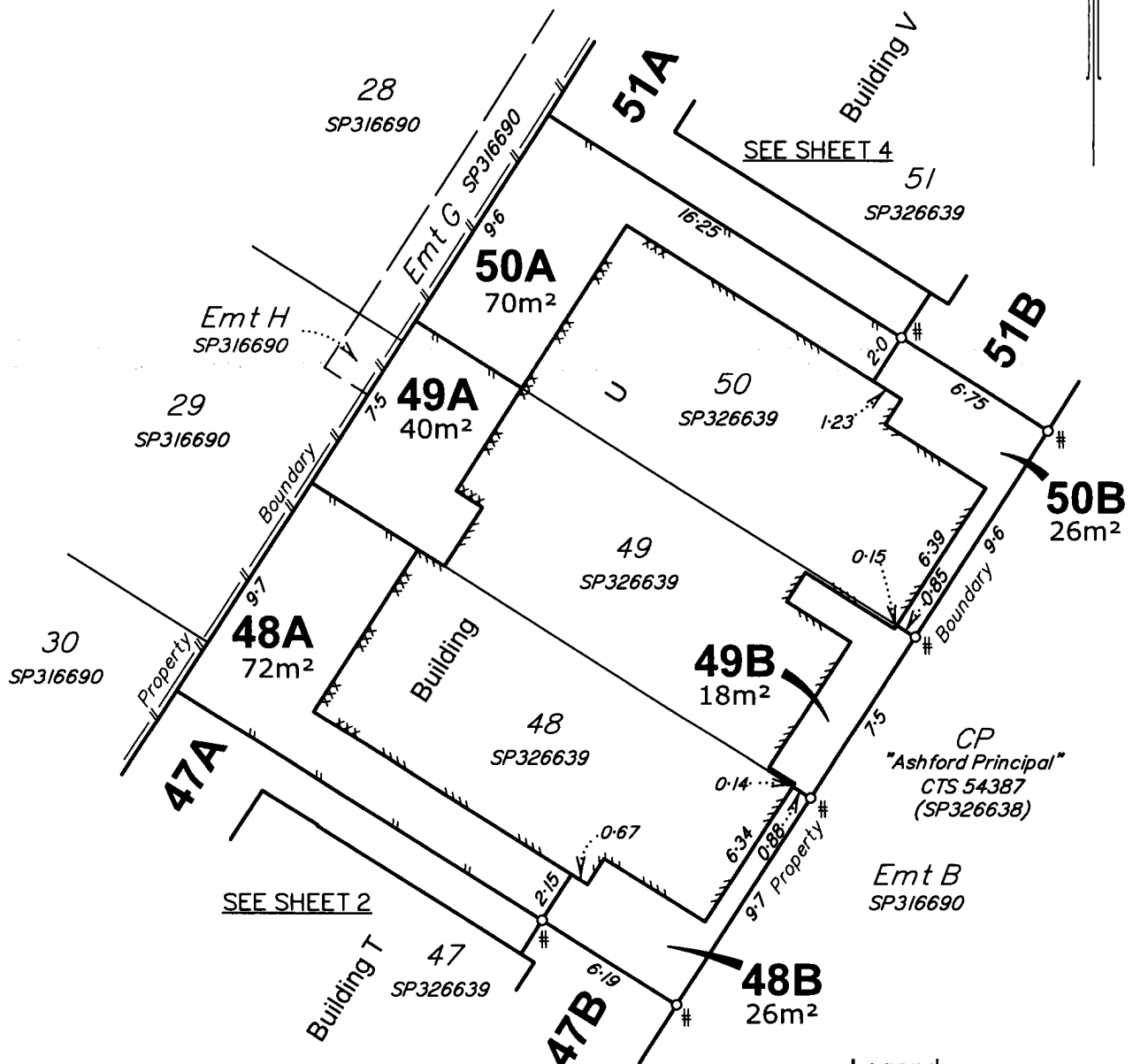
SCHEDULE E

QUEENSLAND LAND REGISTRY CMS

Sheet	of
91	96
Plan	Sheet
3	8

PLAN D - EXCLUSIVE USE PLAN

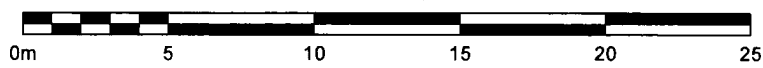
"ASHFORD TERRACES" CTS 55116



Legend

- # Denotes dumpy peg placed at corner
- ⊘ Denotes boundary along concrete edge
- ⊘ Denotes boundary along fence
- ⊘ Denotes boundary along face of wall

Scale 1:250



Ashford Terraces CTS 55116

FORM 20 Version 2
Land Title Act 1994, Land Act 1994
and Water Act 2000

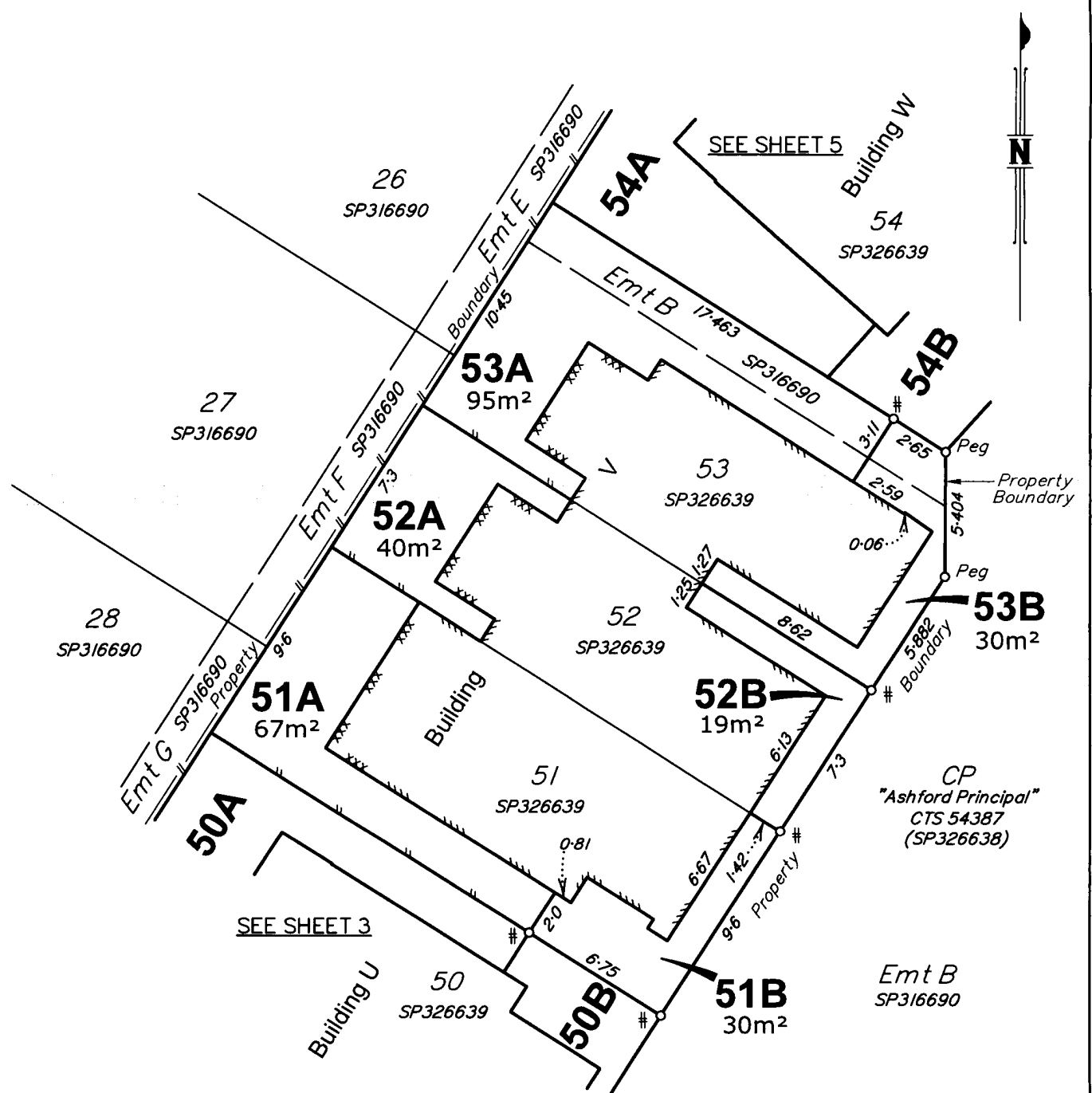
SCHEDULE E

QUEENSLAND LAND REGISTRY CMS

Sheet	of
92	96
Plan	of
4	8

PLAN D - EXCLUSIVE USE PLAN

"ASHFORD TERRACES" CTS 55116

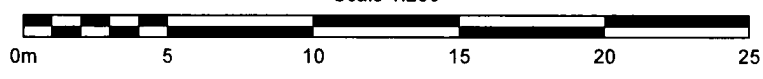


CP
"Ashford Principal"
CTS 54387
(SP326638)

Legend

- # Denotes dumpy peg placed at corner
- x-x- Denotes boundary along concrete edge
- x- Denotes boundary along fence
- x- Denotes boundary along face of wall

Scale 1:250



Ashford Terraces CTS 55116

FORM 20 Version 2
Land Title Act 1994, Land Act 1994
and Water Act 2000

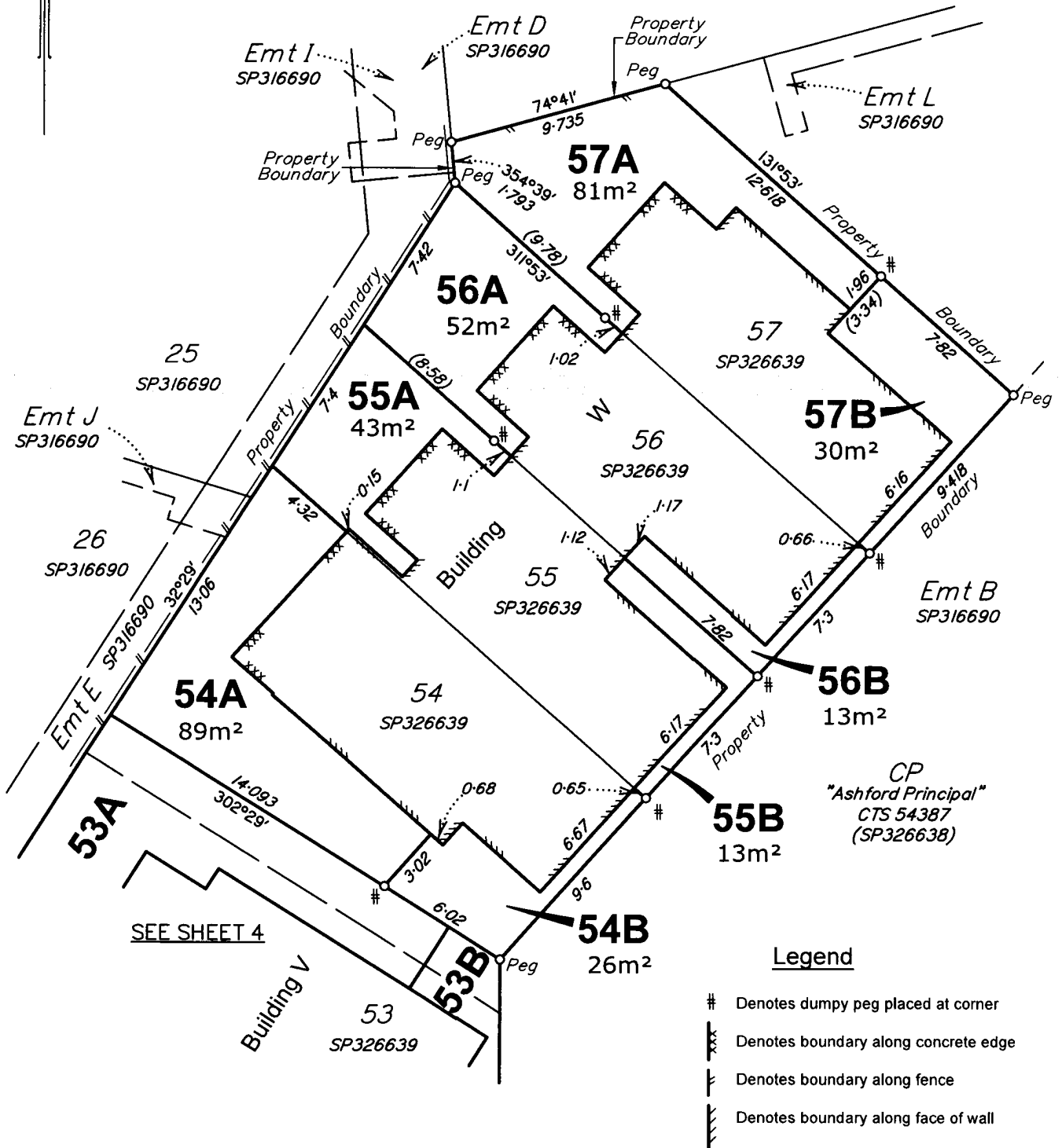
SCHEDULE E

QUEENSLAND LAND REGISTRY CMS

Sheet	of
93	96
Plan	of
5	8

PLAN D - EXCLUSIVE USE PLAN

"ASHFORD TERRACES" CTS 55116



Ashford Terraces CTS 55116

FORM 20 Version 2
Land Title Act 1994, Land Act 1994
and Water Act 2000

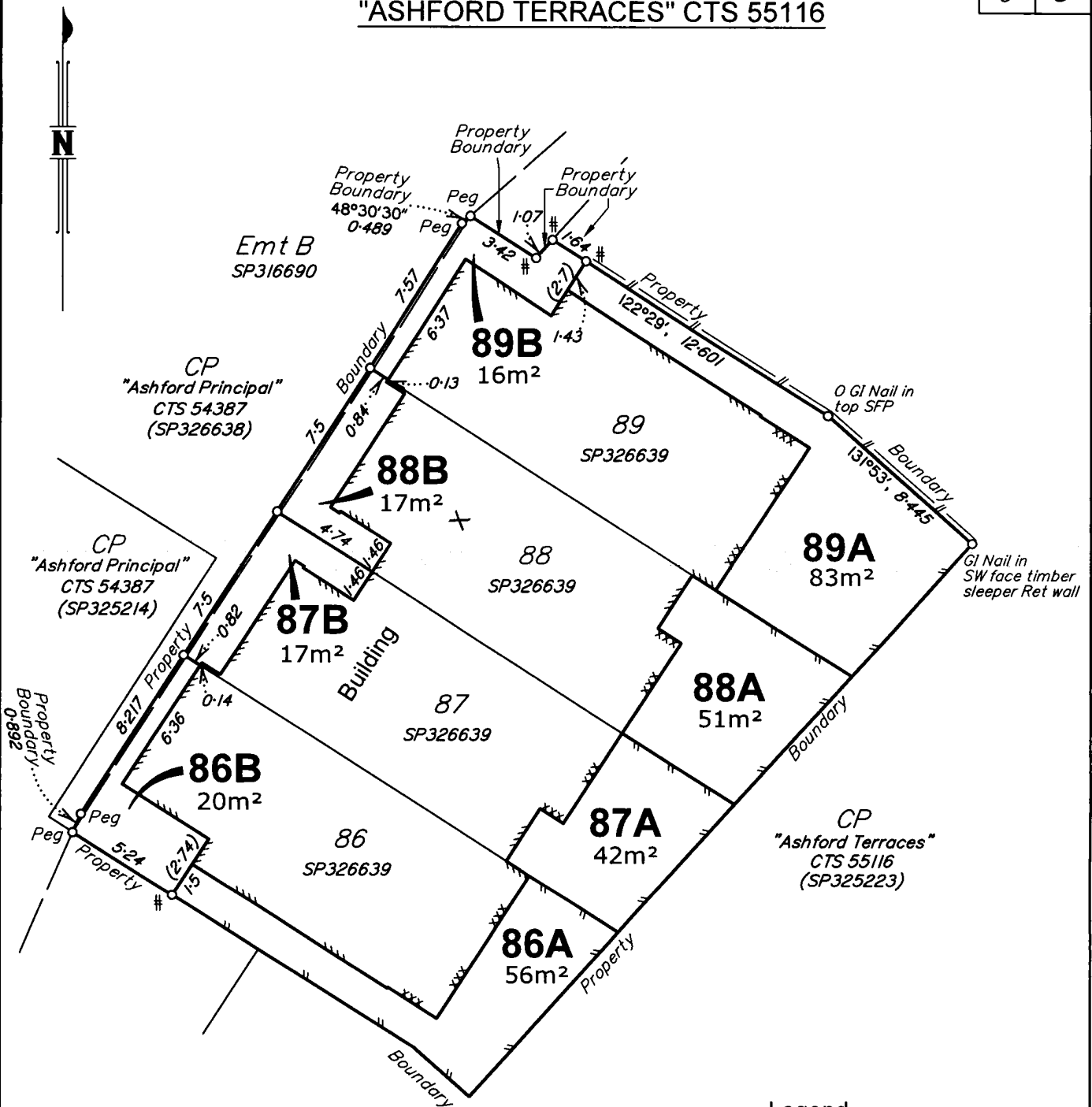
SCHEDULE E

QUEENSLAND LAND REGISTRY CMS

Sheet	of
94	96
Plan	Sheet
6	8

PLAN D - EXCLUSIVE USE PLAN

"ASHFORD TERRACES" CTS 55116



Legend

- # Denotes dumpy peg placed at corner
- Denotes boundary along concrete edge
- - - Denotes boundary along fence
- ||| Denotes boundary along face of wall

Scale 1:250



Ashford Terraces CTS 55116

FORM 20 Version 2
Land Title Act 1994, Land Act 1994
and Water Act 2000

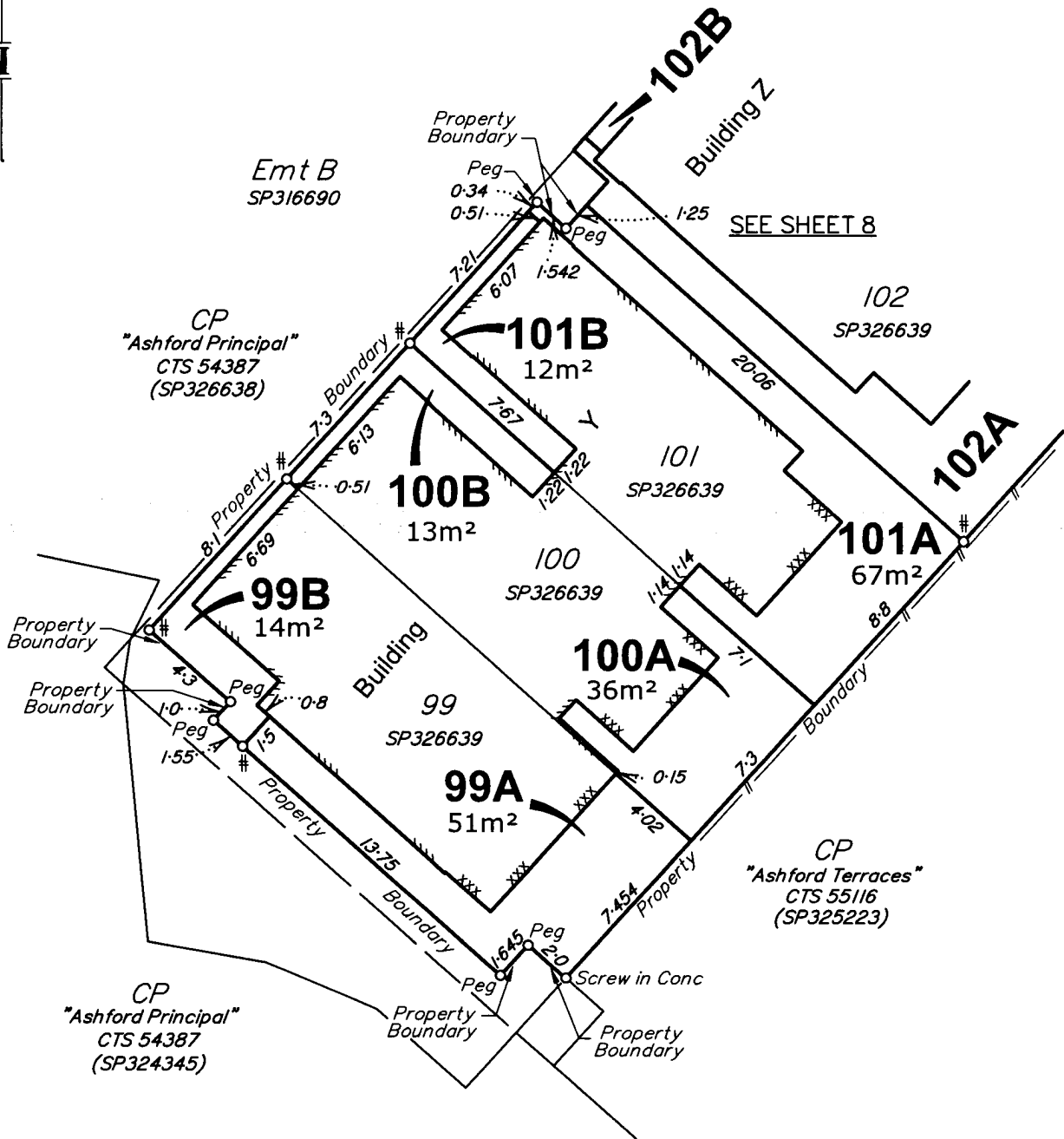
SCHEDULE E

QUEENSLAND LAND REGISTRY CMS

Sheet	of
95	96
Plan	Sheet
7	8

PLAN D - EXCLUSIVE USE PLAN

"ASHFORD TERRACES" CTS 55116



Legend

- # Denotes dumpy peg placed at corner
- ▬▬▬▬ Denotes boundary along concrete edge
- ▬▬▬▬ Denotes boundary along fence
- ▬▬▬▬ Denotes boundary along face of wall

Scale 1:250



